



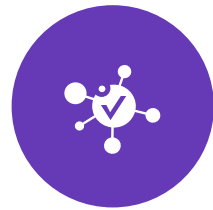
## Alcatel-Lucent Enterprise UNIFIED ACCESS megoldás

Luky Gábor

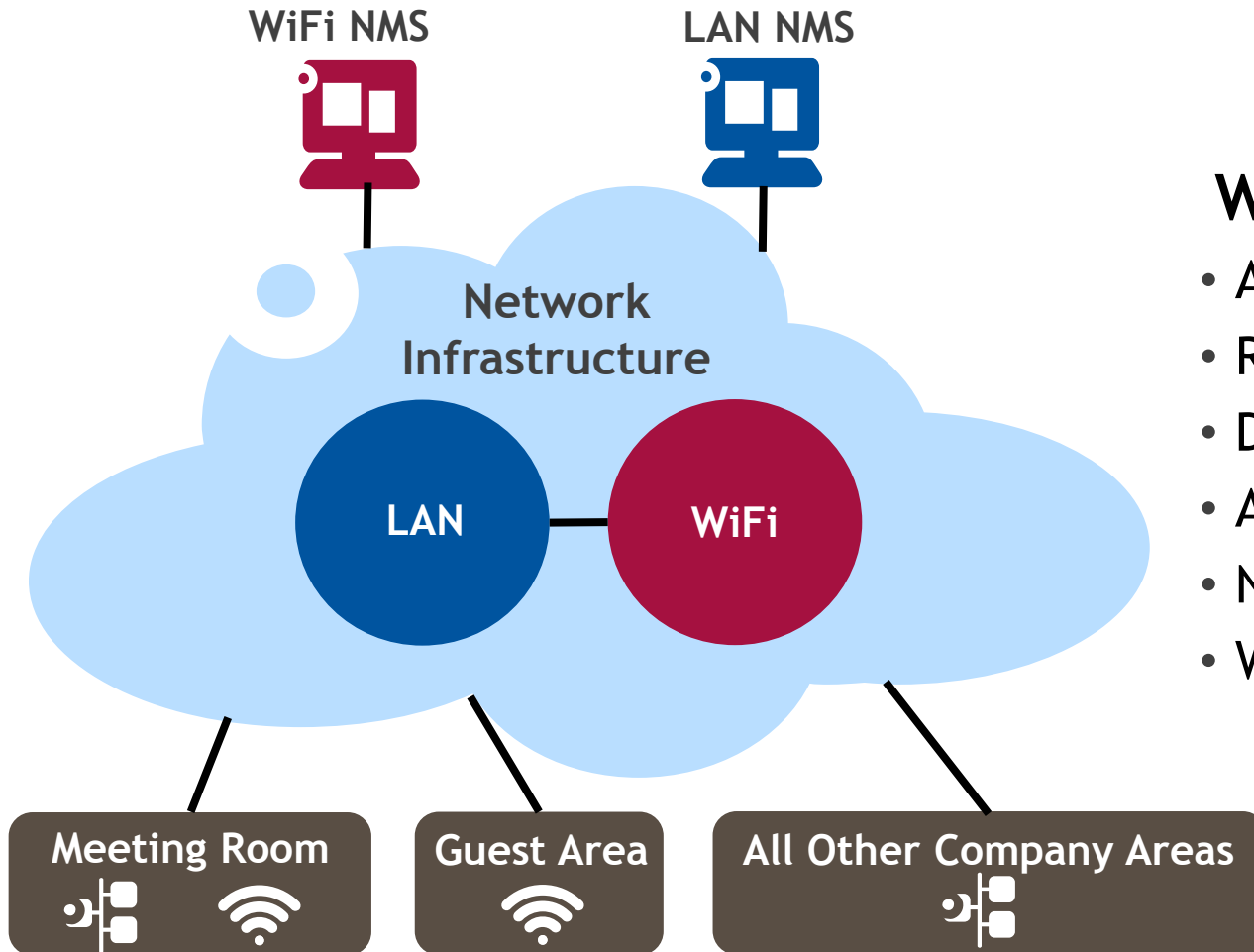
2014. Május

# Uni[redacted]ess

One Network • C[redacted]pplication Fluent



# THE STATUS OF MANY CORPORATE CAMPUS NETWORKS TODAY



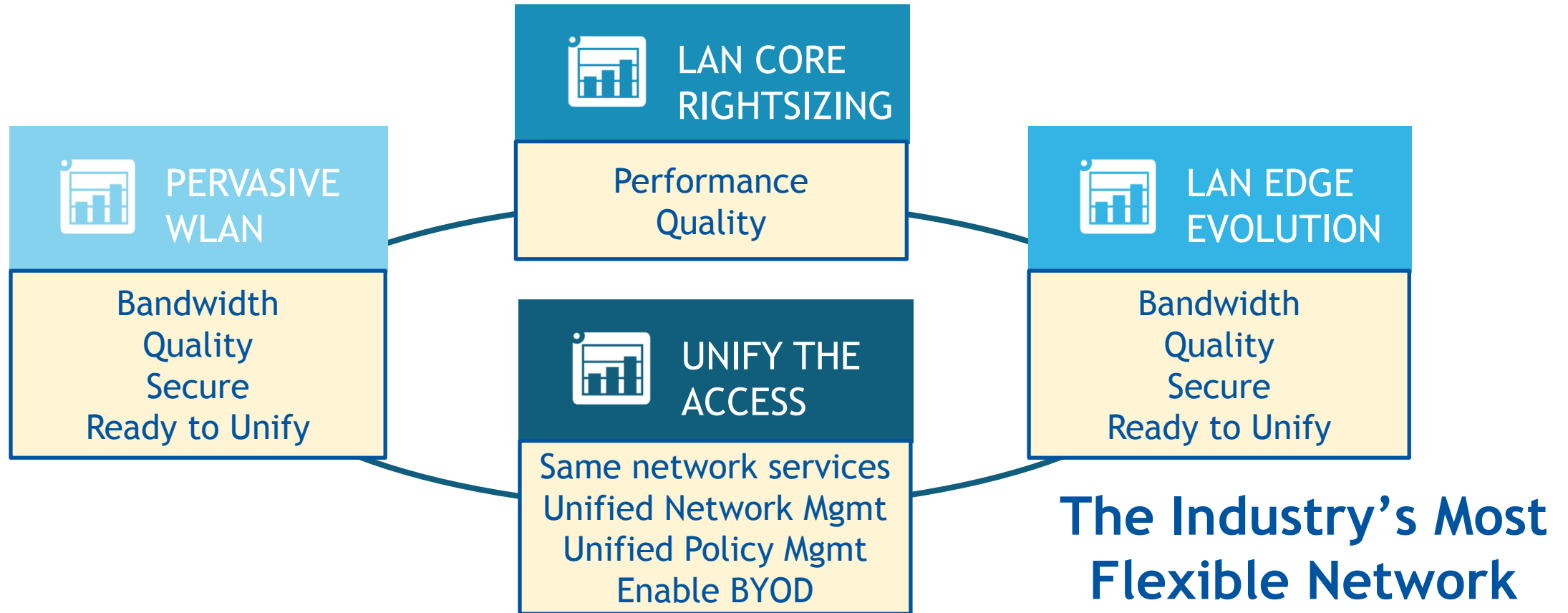
## What's the status of your network?

- Application hiccups?
- Resource intensive management ?
- Difficult to connect personal devices?
- Anyone can access your assets?
- No control on device misbehavior?
- WiFi limited to guest areas?

THE NETWORKS NEED TO EVOLVE

# THE CONVERGED CAMPUS PROPOSITION

## EVOLVE YOUR NETWORK WHILE PROTECTING YOUR INVESTMENT



THE DEVICES YOU BUY TODAY WILL BE LEVERAGED AS YOU EVOLVE THE NETWORK TO SUPPORT THE PERSONAL CLOUD ERA



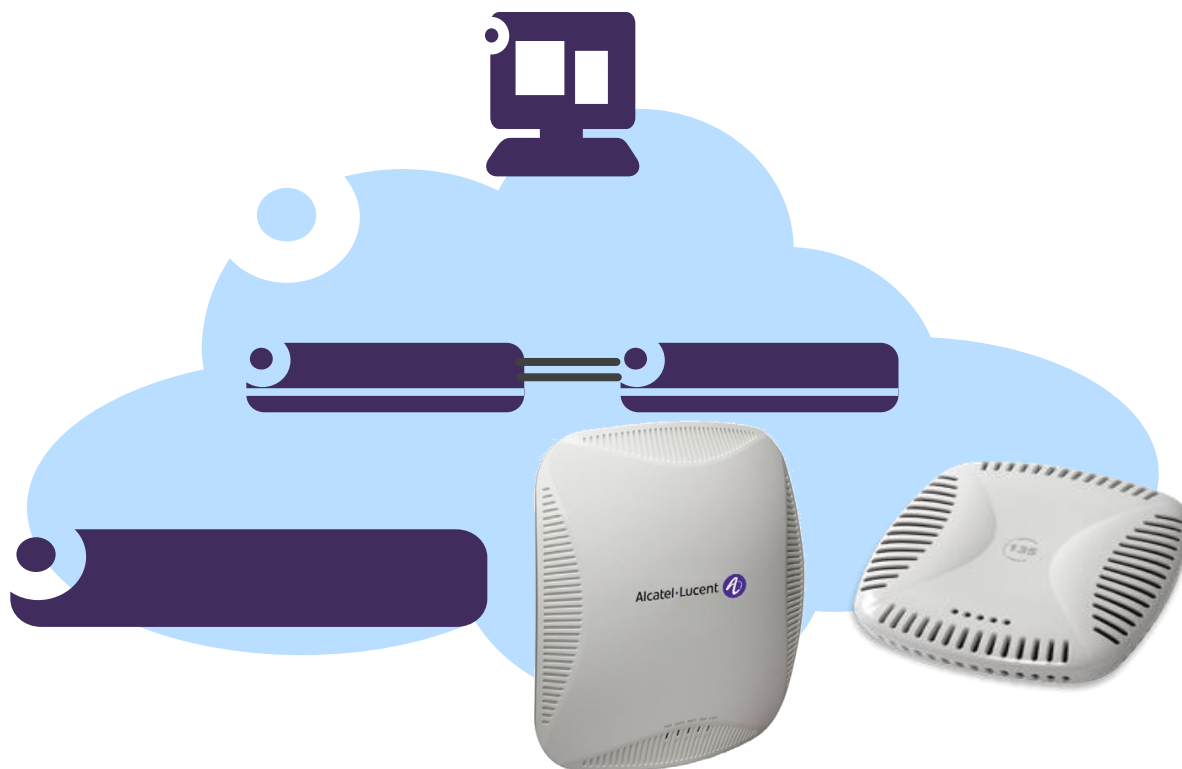
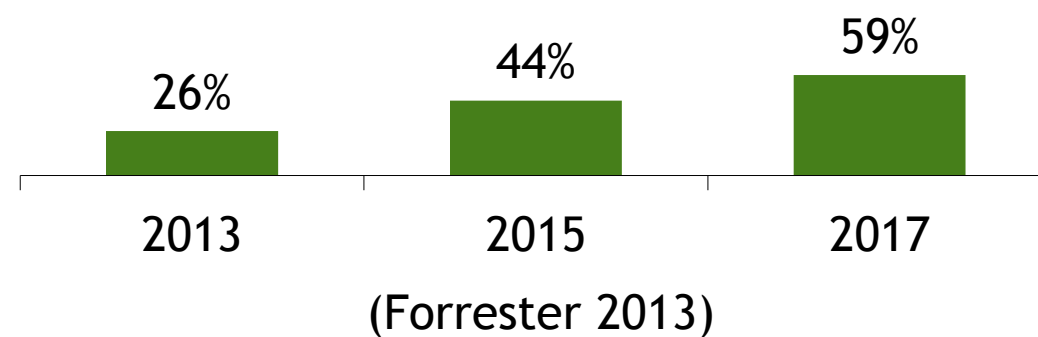
# PERVASIVE WLAN

## READY TO SUPPORT THE TREMENDOUS WIRELESS CONNECTIVITY GROWTH

### Pervasive WLAN

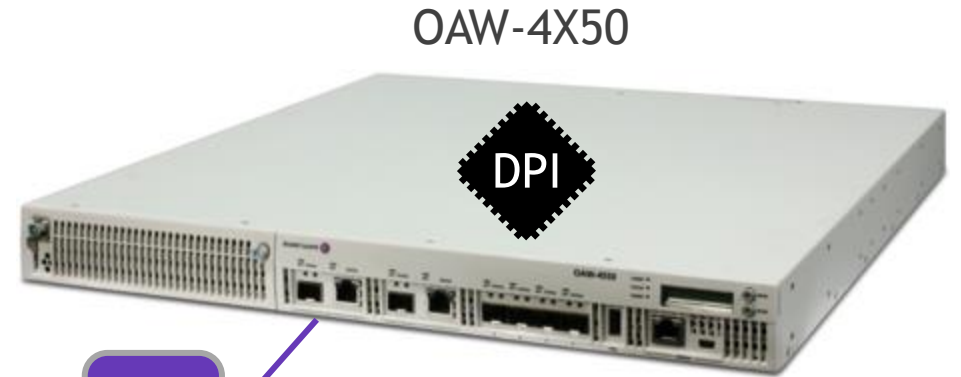
- Application Fluent
- IEEE 802.11n/ac
- Ready for unified management
- Authentication enforcement
- Open to advanced policy enforcement

Percentage of enterprise traffic over WiFi



# NEW OMNIACCESS WIRELESS LAN CAPABILITIES

- Enhanced Unified Access capabilities
  - Application collection
  - Application enforcement
  - Increased signatures (1500)
  - SDN interfaces
  - DLNA (Digital Living Network Alliance) support on AirGroup.
- New 802.11ac OmniAccess Gigabit WiFi APs :
  - Value
  - Outdoor
  - Instant



✓SDN  
Inside

AP-103/204/205  
IAP-114/115/224/225



AP-274/275



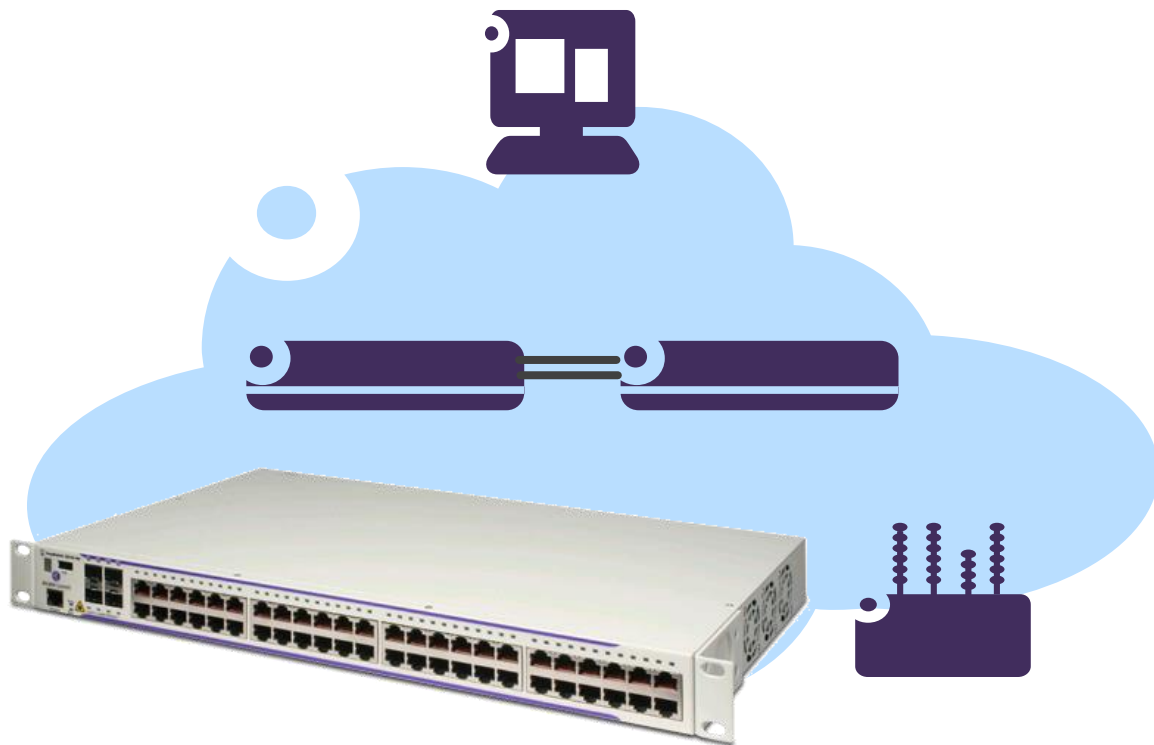


# LAN EDGE EVOLUTION

VERSATILE, HIGH PERFORMANCE, SECURE ACCESS

## The evolution of the LAN edge

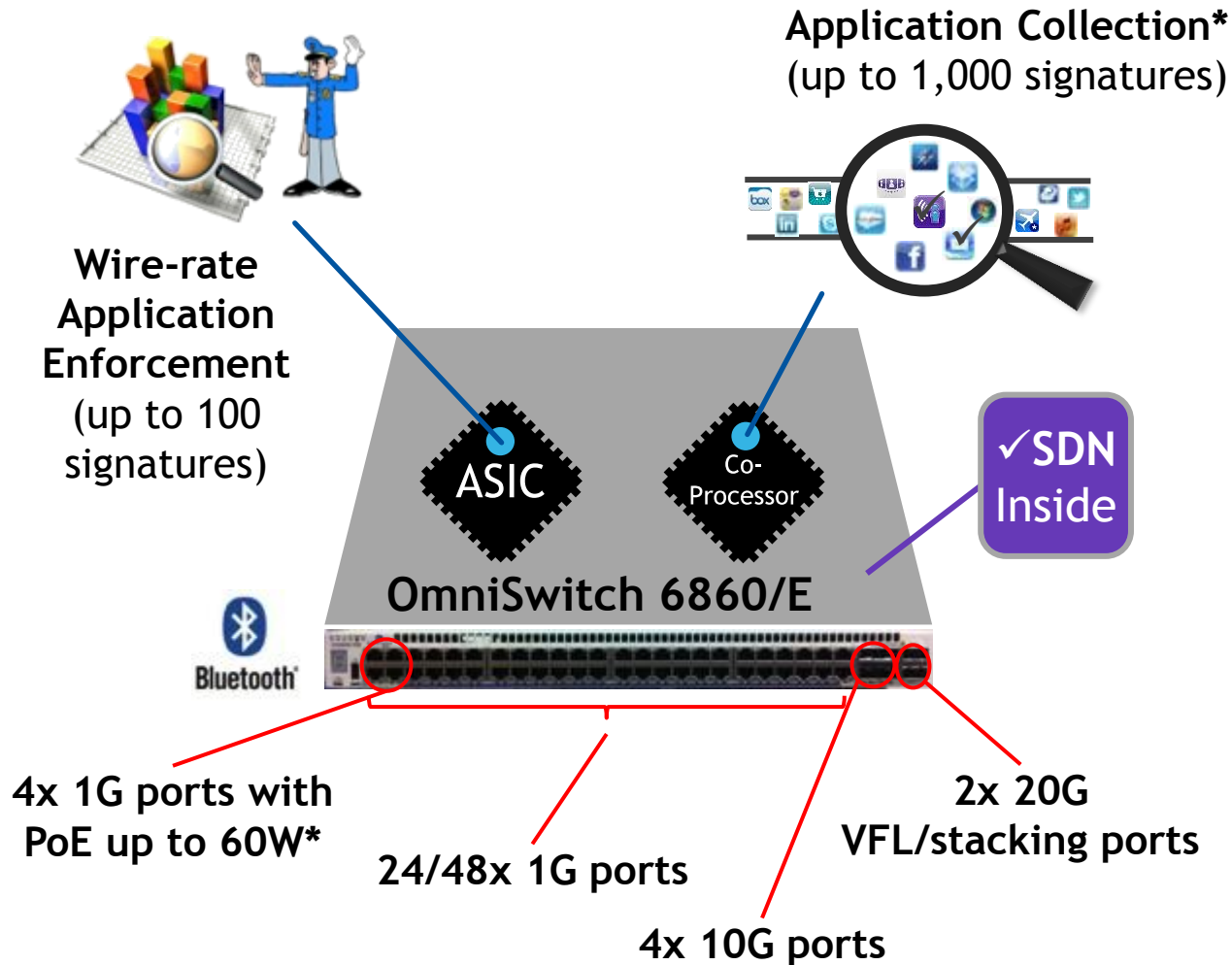
- Application Fluent
- Ready for Unified management
- Authentication enforcement
- Powers modern WiFi access points
- Open to advanced policy enforcement
- Won't throttle your WLAN



Fixed LAN Access won't go away overnight

# OMNISWITCH 6860/E

## THE INDUSTRY'S MOST ADVANCED ACCESS SWITCH



\* OS6860E model only

### Innovative Architecture

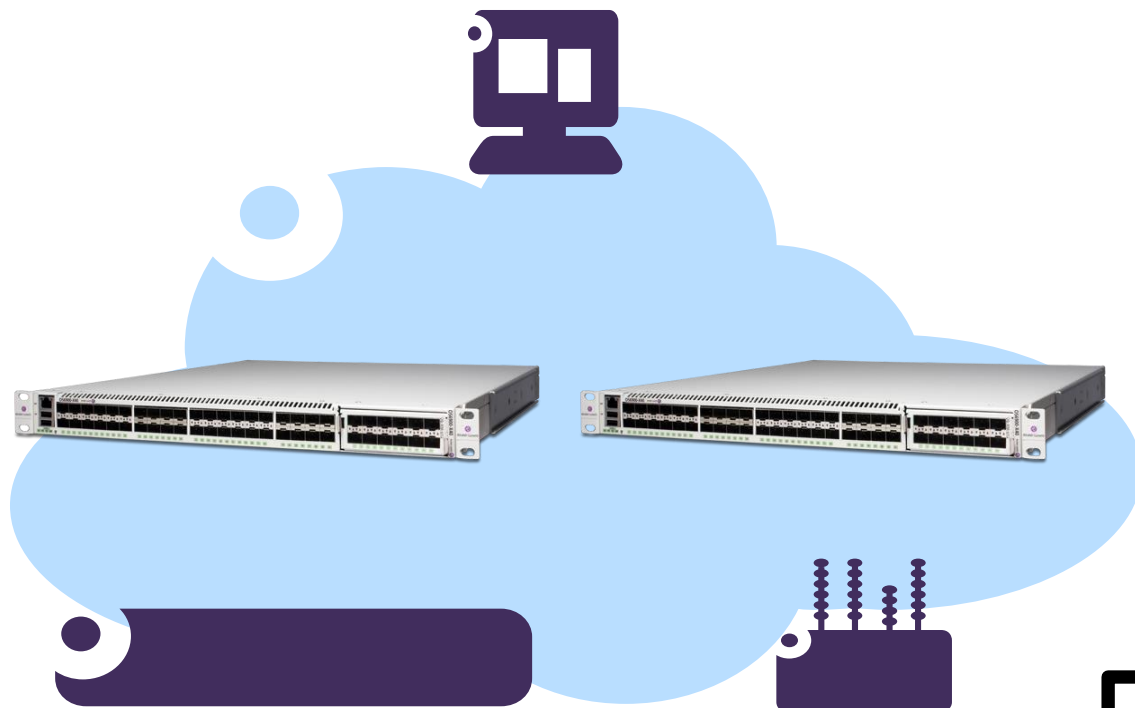
- 256G wire rate engine
- Wire-rate DPI engine
- Coprocessor for enhanced network services \*
  - Application Collection
  - Future network services
- Power capabilities:
  - Up to 48 PoE+, 4 PoE-60W ports on E models
  - 1+1 redundant, hot-swappable power supplies
  - Power load sharing and Backup Power Shelf
- Virtual Chassis support
- IT friendly:
  - All ports, including stack in the front
  - Bluetooth management port
  - Front to back cooling





# CORE EVOLUTION

## RIGHT-SIZED, VIRTUALIZED NETWORK CORE



### Right sizing the core

- Virtual Chassis
- Application Fluent
- Highly available
- High performance
- Unified management
- Won't throttle your WLAN

### Compare to redundant modular chassis

- Less complexity
- Lower energy consumption
- Less rack space



# UNIFIED ACCESS STRATEGY FOR CONVERGED CAMPUS

## SAME NETWORK SERVICES ON WIRED AND WIRELESS



UNIFY THE  
ACCESS

### Network Management

### Network Services



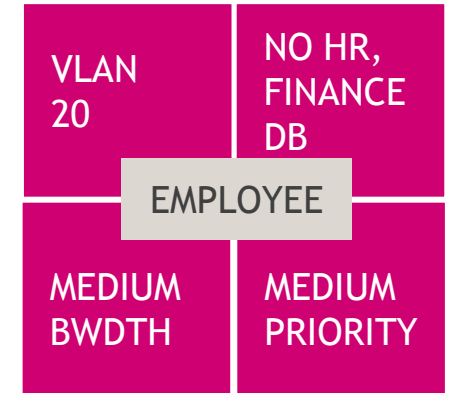
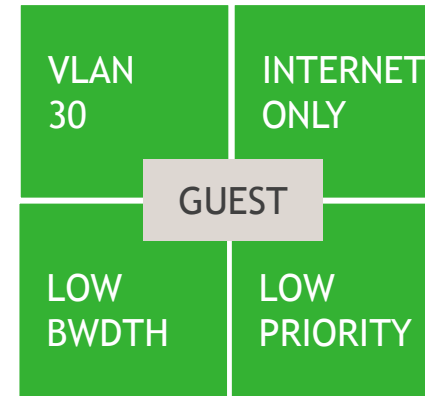
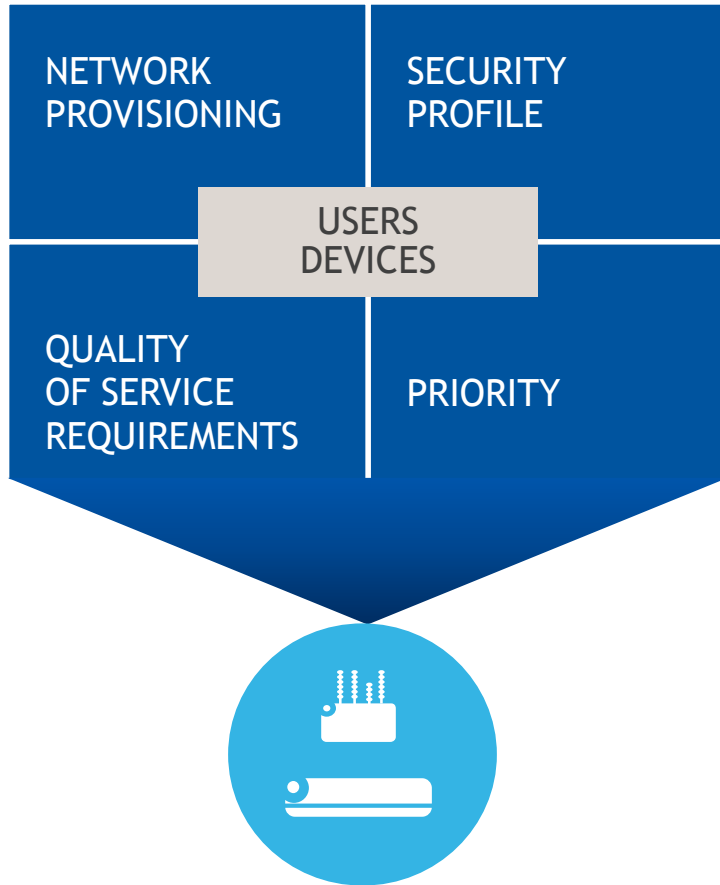
LAN

WiFi

# PROFILING THE USER

## POLICY ENFORCEMENT BASED ON USER ROLE

### USER PROFILE



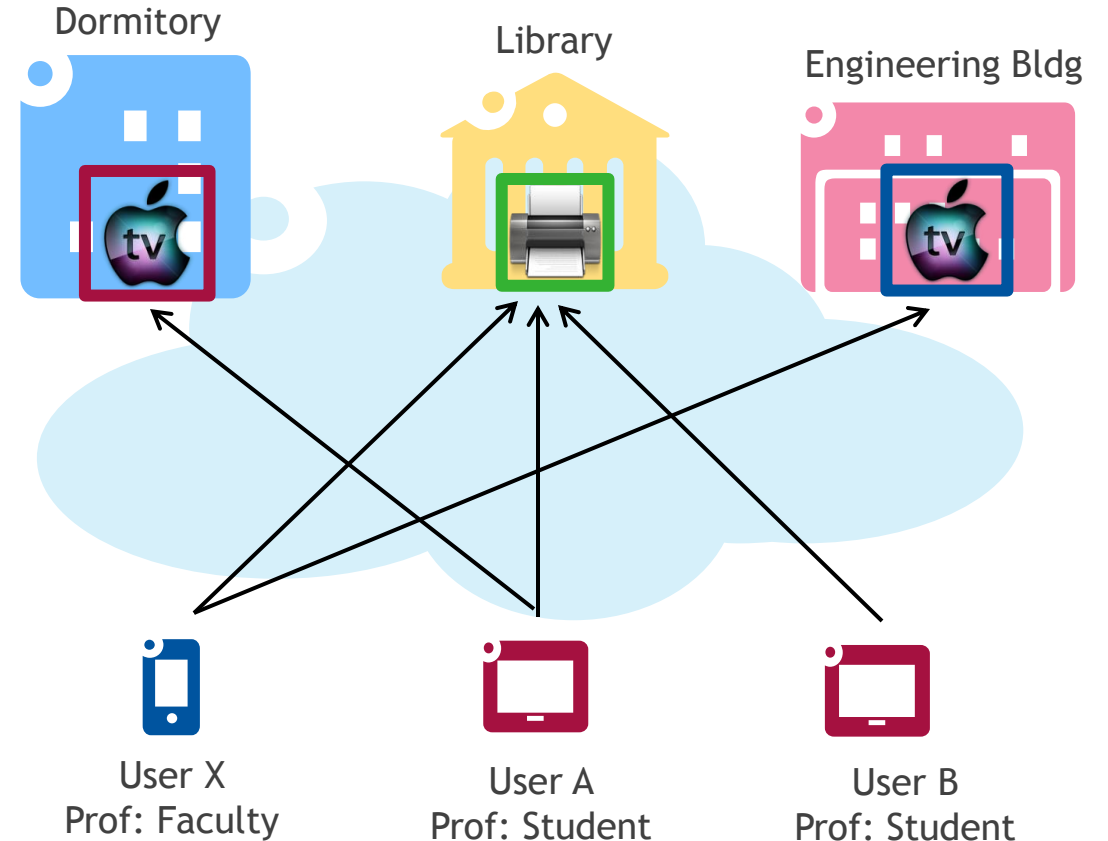
- Enhanced wired and wireless security
- Automated network adjustments better support mobility

# UNIFIED AIRGROUP™ NETWORK SERVICE

## ENABLING APPLE DEVICES TO BE USED IN CORPORATE ENVIRONMENTS

### Benefits:

- Enables the use of Apple devices across the corporate network
- Users self-register Apple devices
- Users customize Apple device accessibility



FIRST AND ONLY VENDOR TO SUPPORT AIRGROUP ON WIRED AND WIRELESS LAN

# BYOD SERVICES WITH CLEARPASS FOR WIRED & WIRELESS DEVICES

## DEVICE PROVISIONING (ON-BOARDING)

- Empower employees
- Enhances security
- Off-loads IT

ONBOARD

## ADVANCED GUEST MANAGEMENT

- Empowers guests and business unit
- Improves customer satisfaction
- Potential revenue generator

GUEST

## DEVICE POSTURE/HEALTH CHECKS

- Improves security

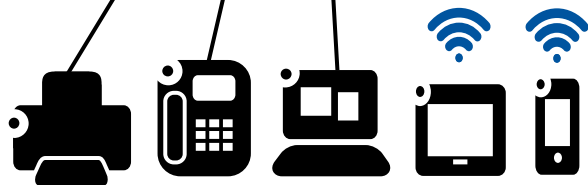
ONGUARD

CLEARPASS  
POLICY  
MANAGER\*

Active Directory  
DHCP Server

Existing  
RADIUS

MDM



\* INCLUDES ADVANCED POLICIES AND DEVICE FINGERPRINTING

- Better visibility
- Enhanced user experience

# UNIFIED ACCESS ACCESS MANAGEMENT: CLEARPASS ONBOARD



- IT creates configuration and certificate data
- Authorizes BYOD enrollment
- Maintains device database for policies and device revocation

- User connects device and is redirected to portal
- Enters AD credentials to begin onboarding device
- Accepts certificate and connects to secure network



# UNIFIED ACCESS ACCESS MANAGEMENT: CLEARPASS GUEST

## Guest Registration

### Guest Self-Registration

Please register to access the network.

#### Visitor Registration

\* **Your Name:**

Please enter your full name.

\* **Email Address:**

Please enter your email address. This will become your username to log into the network.

\* **Gender**

## Guest Registration

Please complete the form below to gain access to the network.

### Visitor Registration

\* **Sponsor's Name:**

Name of the person sponsoring this visitor account.

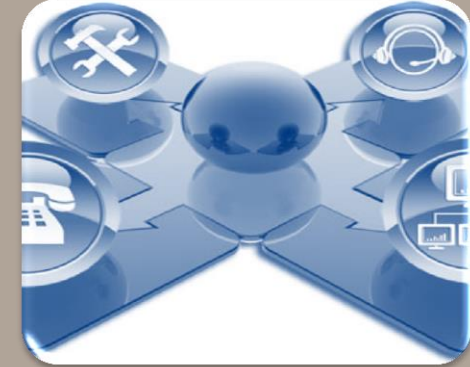
\* **Sponsor's Email:**

Email of the person sponsoring this visitor account.

\* **Your Name:**

Please enter your full name.

\* **Email Address:**



## Self-registration

- Customizable, automated workflows
- Notification via SMS, email, badge printer
- One time registration

## Sponsored Guest Access

- Reception sponsor interface
- Email sponsor approval workflow
- Enable any employee to instantly sponsor

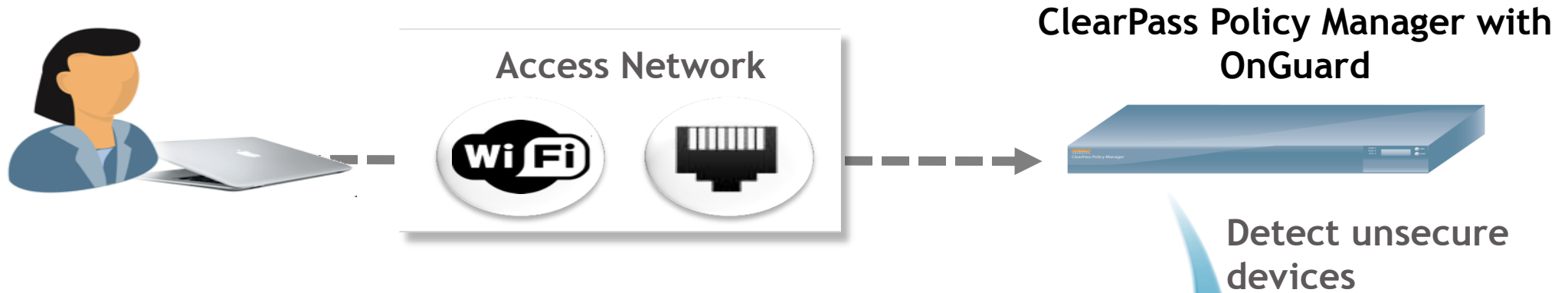
## Pre-registration

- Bulk import from file eg. Excel, text
- Generate visitor badges or notify via branded email templates

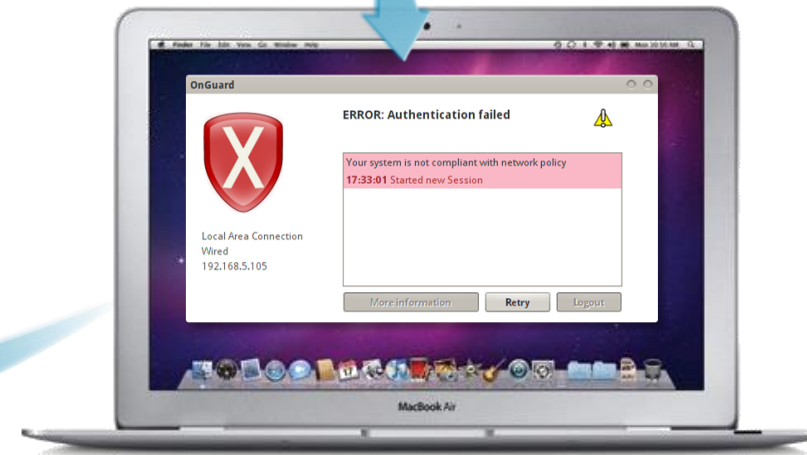
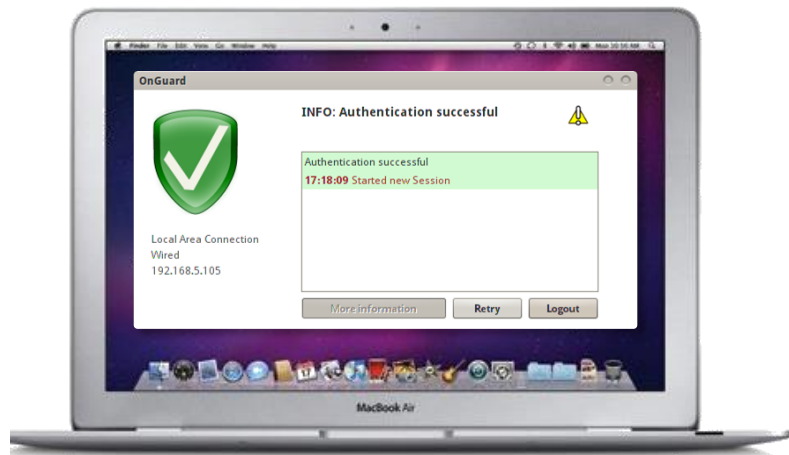
## 3<sup>rd</sup> Party Integration

- XML API's for integration with existing applications

# UNIFIED ACCESS ACCESS MANAGEMENT: CLEARPASS ONGUARD



Minimizes Risk to Network



Block access to network resources across wired,  
wireless & remote  
Auto-Remediate the device



# NETWORK ANALYTICS VISIBILITY & CONTROL



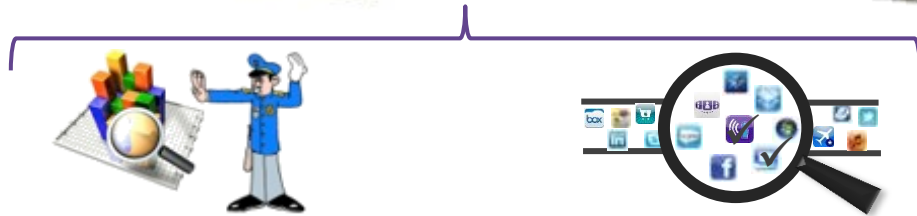
OV2500



OS6860/E



OAW4X50



## Visibility

- Application Collection
- Application Reporting

## Control

- Application Enforcement
- Policy Management

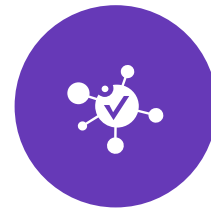
## Benefits

- Prioritizes business critical applications
- Increases security: Stop non-compliant apps
- Harmonizes business & personal network use
- Optimizes use of network resources
- Simplifies roll out of new applications

INTELLIGENCE AND ENFORCEMENT AT THE EDGE OF THE NETWORK

# Unified Access

One Network • One Management • Application Fluent



Follow us on



[Twitter.com/ALUEnterprise](https://twitter.com/ALUEnterprise)



[Facebook.com/ALUEnterprise](https://facebook.com/ALUEnterprise)



[Youtube.com/user/enterpriseALU](https://youtube.com/user/enterpriseALU)



[Linkedin.com - Group: Alcatel-Lucent Enterprise](https://linkedin.com/group/Alcatel-Lucent-Enterprise)



[Slideshare.net/tagged/Enterprise](https://slideshare.net/tagged/Enterprise)



[Storify.com/ALUEnterprise](https://storify.com/ALUEnterprise)