

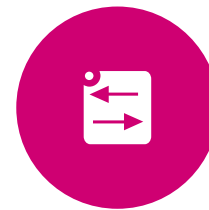
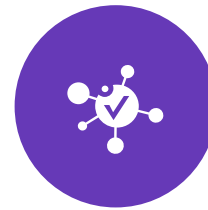
Alcatel-Lucent Enterprise UNIFIED ACCESS megoldás

Luky Gábor

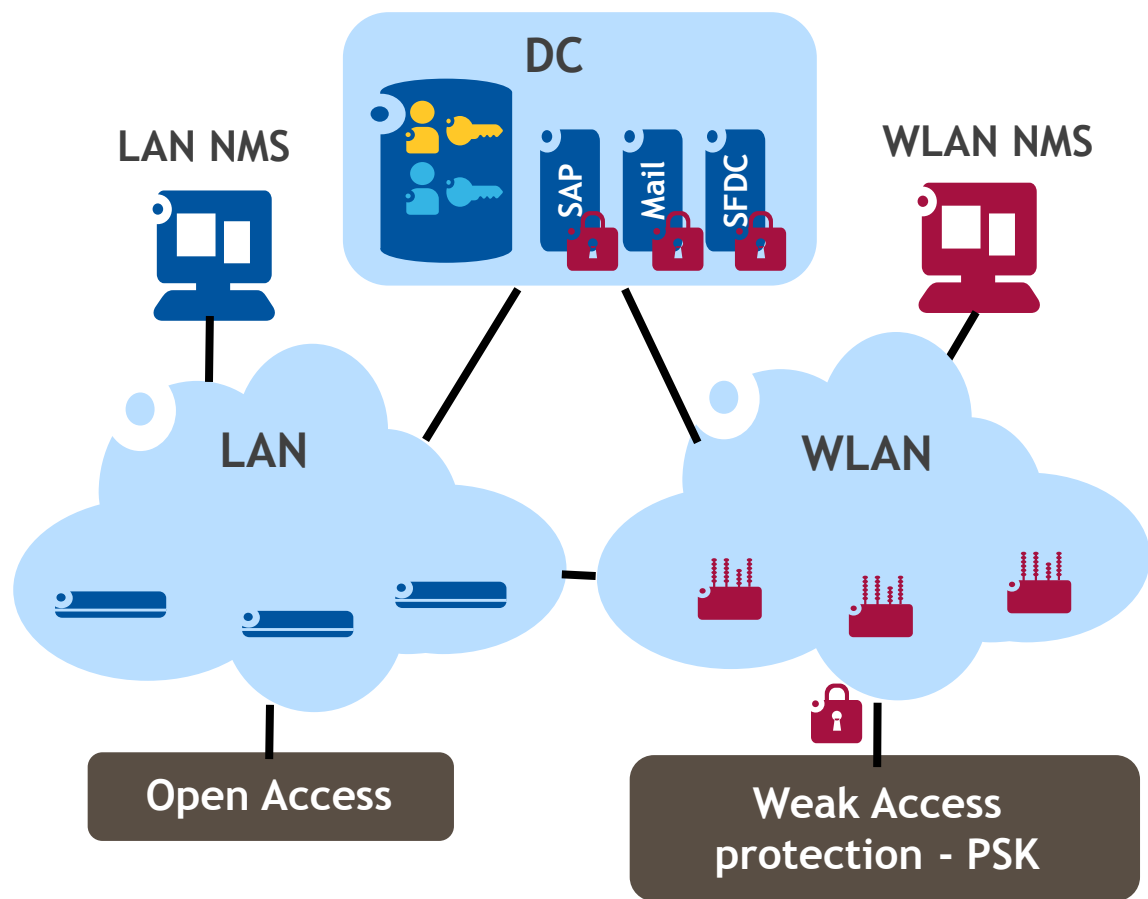
2014. szeptember

Unified Access

One Network • One Management • Application Fluent

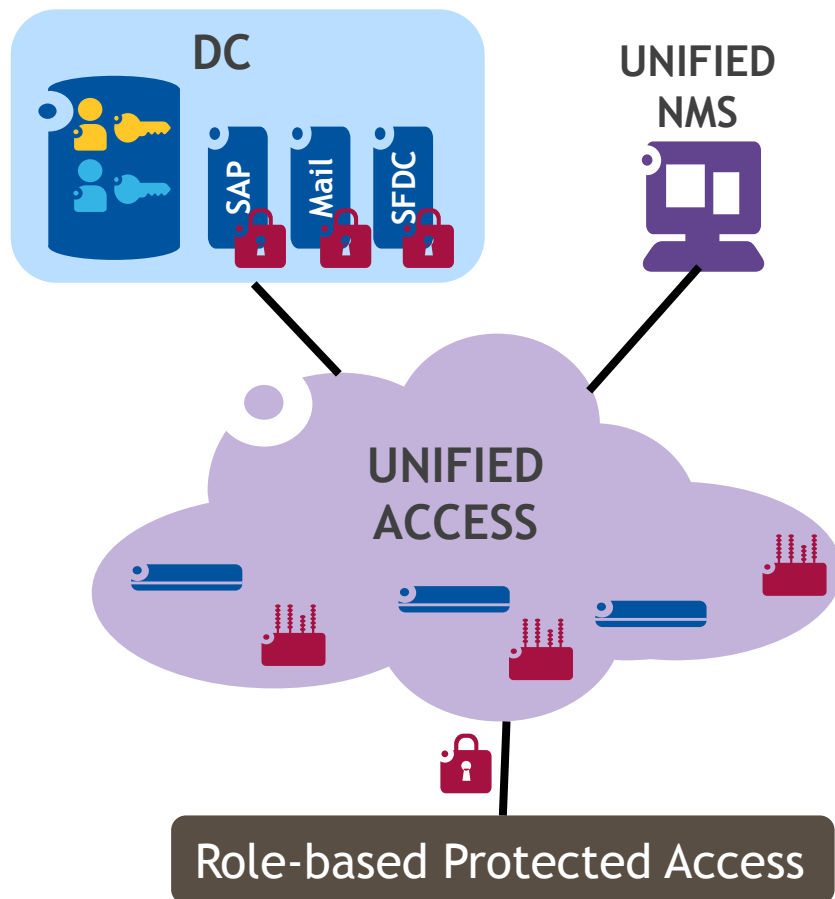


Example of CORPORATE NETWORKS without unified access



- Corporate user directory secures application access only
- LAN is open to abuse
- Weak WLAN access security based on PSK
- Large investment operating two networks with independent management systems
- Inconsistent user experience between LAN and WLAN
- Poor or no QoS offered

WHAT WE CAN OFFER WITH A unified access



- Corporate user directory secures application and network access
- Secure LAN & WLAN access (based on roles)
- Reduced IT effort operating one integrated network with one management system
- Consistent user experience between LAN and WLAN
- Unified Role based QoS

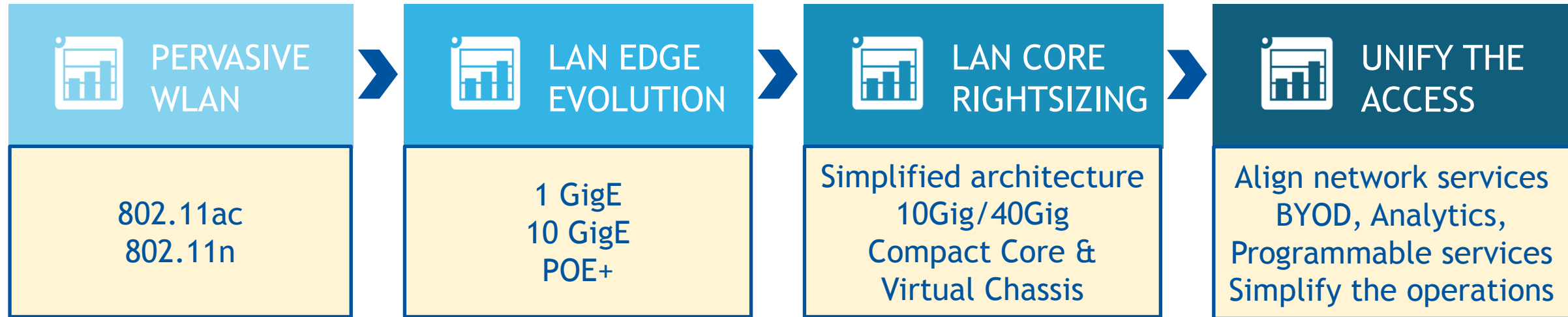
✓ **BETTER USER EXPERIENCE**

✓ **SIMPLIFIED OPERATIONS**

✓ **IMPROVED NETWORK SECURITY**

THE ALCATEL-LUCENT ENTERPRISE PROPOSITION

The Industry's Most Flexible Network



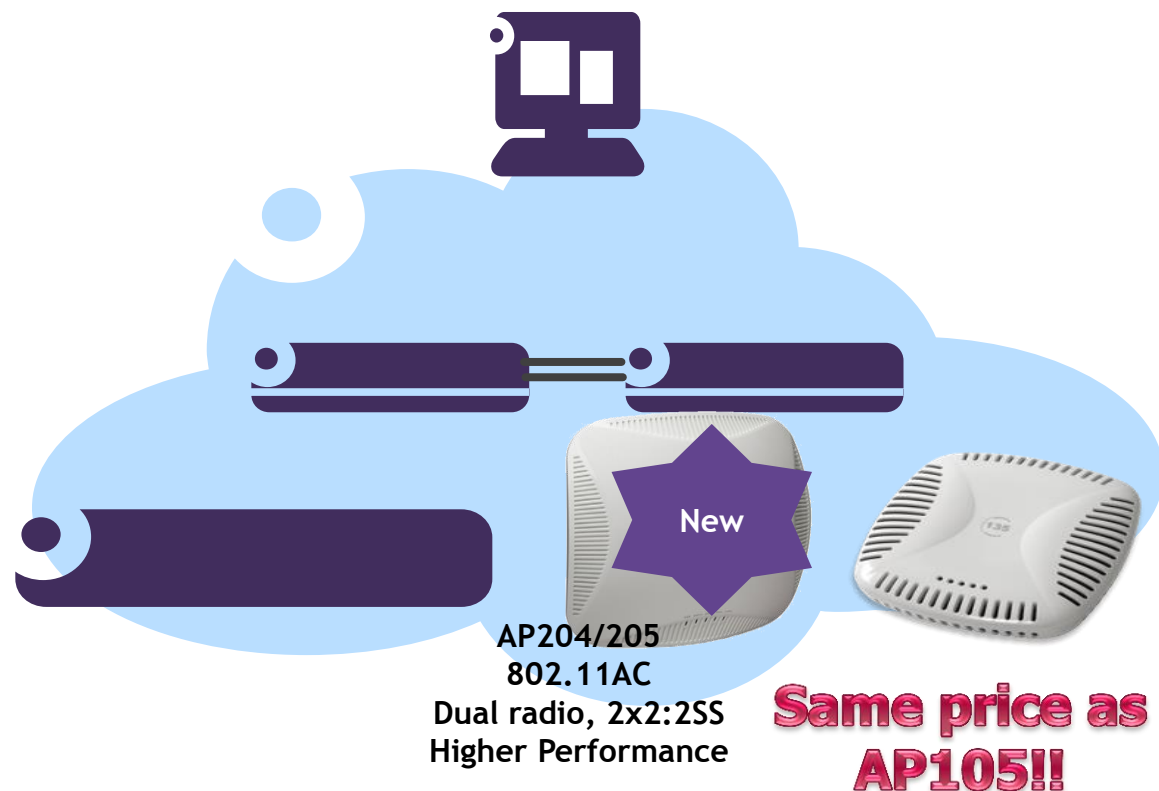
SAME DEVICES YOU BUY TODAY WILL BE LEVERAGED THROUGH THE EVOLUTION PROCESS





PERVASIVE WLAN

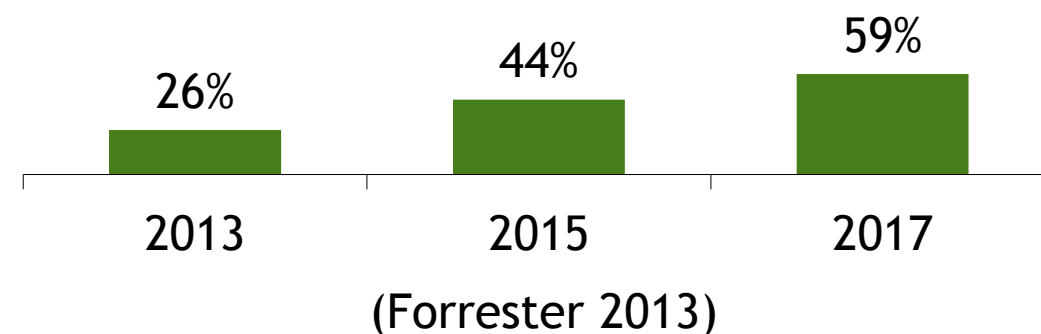
READY TO SUPPORT THE TREMENDOUS WIRELESS CONNECTIVITY GROWTH



Pervasive WLAN

- Application Fluent
- IEEE 802.11n/ac
- Ready for unified management
- Authentication enforcement
- Open to advanced policy enforcement

Percentage of enterprise traffic over WiFi



TRANSFORM YOUR EDGE

VERSATILE, HIGH PERFORMANCE, SECURE ACCESS



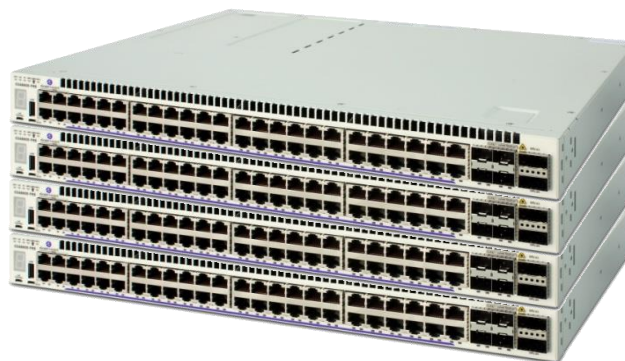
LAN EDGE
EVOLUTION

Investment
Protection



OS6450

Advanced



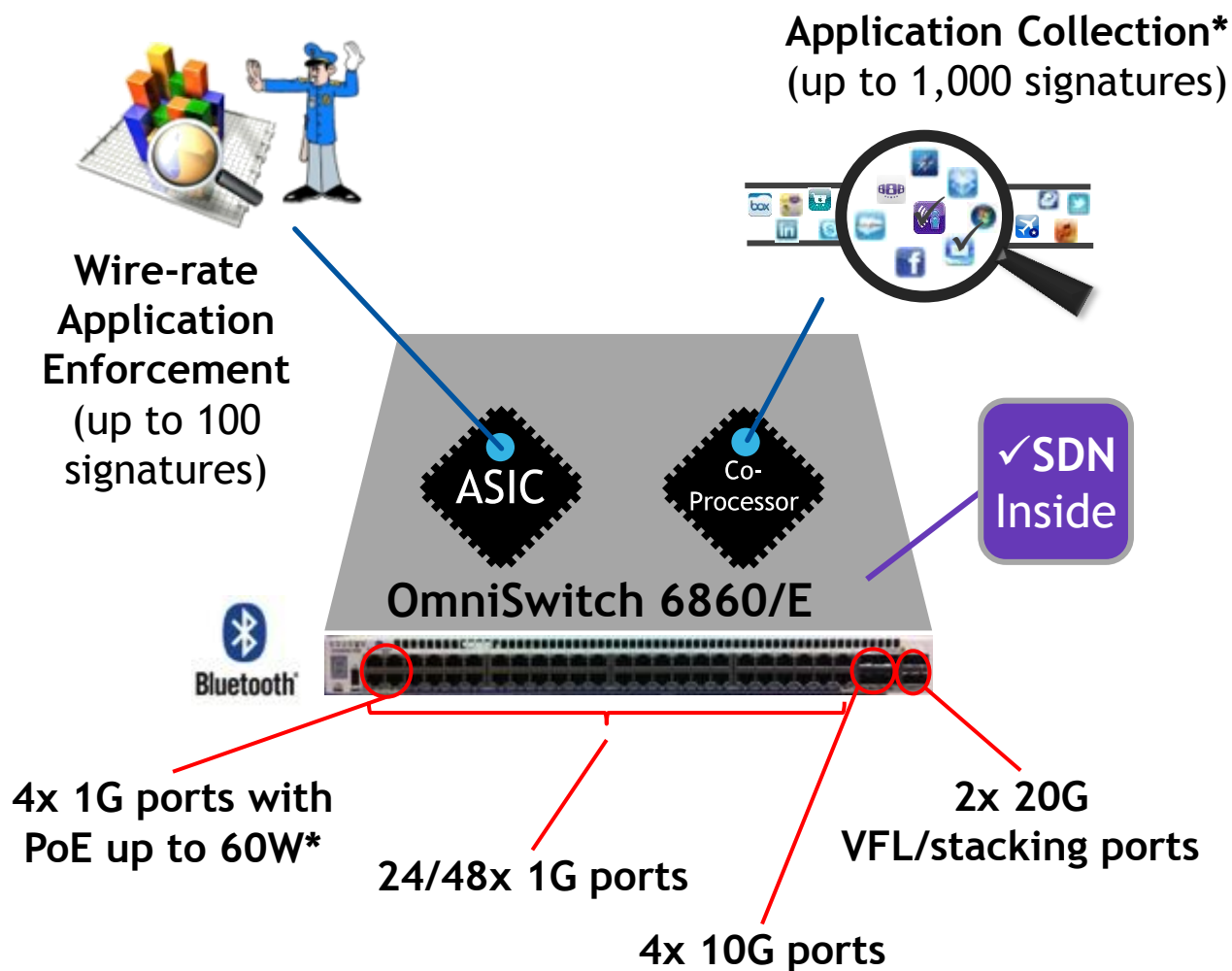
OS6860/6860E

- ✓ *OS6450: Evolutionary 100M/1G → 1G/10G*
- ✓ Linear Investment
- ✓ Embedded security - UNP
- ✓ Stack / Virtual Chassis
- ✓ Evolution to SDN
- ✓ PoE+ / PoE++
- ✓ In Service Software Upgrade
- ✓ Application Analytics with DPI



OMNISWITCH 6860/E

THE INDUSTRY'S MOST ADVANCED ACCESS SWITCH



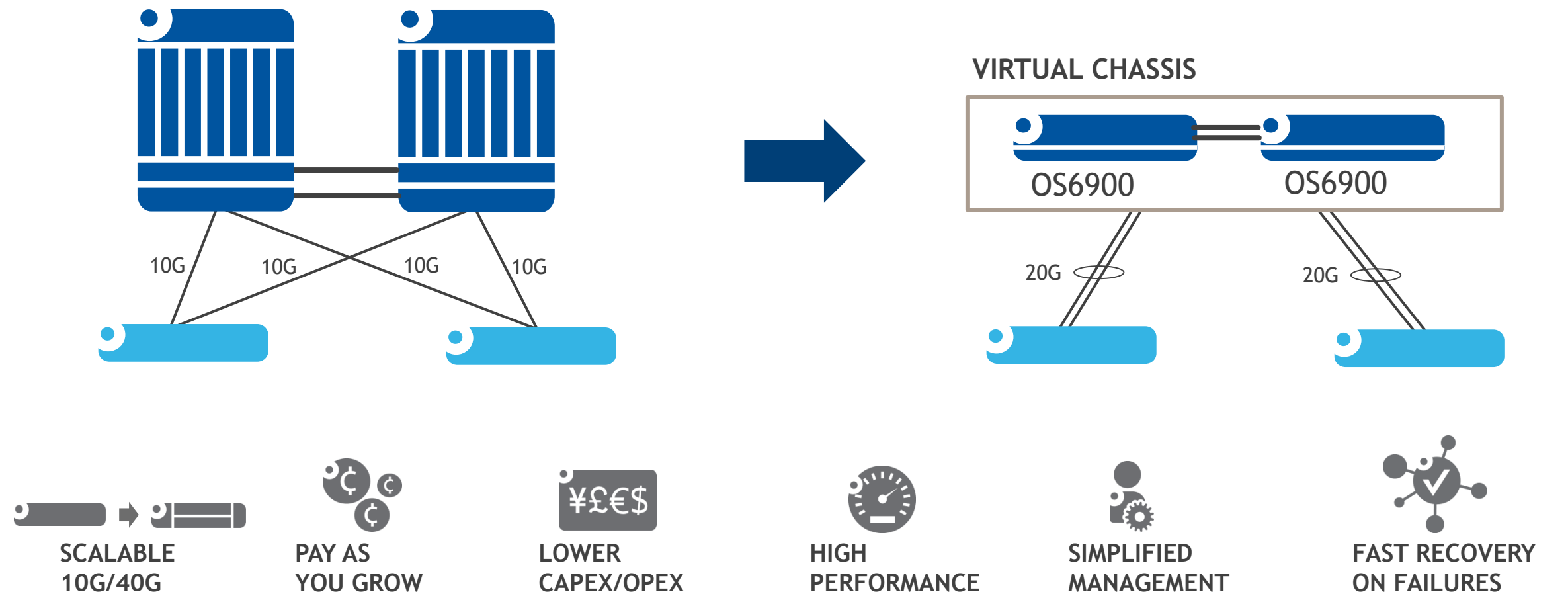
* OS6860E model only

Innovative Architecture

- 256G wire rate engine
- Wire-rate DPI engine
- Coprocessor for enhanced network services *
 - Application Collection
 - Future network services
- Power capabilities:
 - Up to 48 PoE+, 4 PoE-60W ports on E models
 - 1+1 redundant, hot-swappable power supplies
 - Power load sharing and Backup Power Shelf
- Virtual Chassis support
- IT friendly:
 - All ports, including stack in the front
 - Bluetooth management port
 - Front to back cooling

CORE EVOLUTION

RIGHT-SIZED, VIRTUALIZED NETWORK CORE



NETWORK ANALYTICS VISIBILITY & CONTROL



OV2500



OS6860/E



OAW4X50



Visibility

- Application Collection
- Application Reporting

Control

- Application Enforcement
- Policy Management

Benefits

- Prioritizes business critical applications
- Increases security: Stop non-compliant apps
- Harmonizes business & personal network use
- Optimizes use of network resources
- Simplifies roll out of new applications

INTELLIGENCE AND ENFORCEMENT AT THE EDGE OF THE NETWORK

UNIFIED ACCESS STRATEGY FOR CONVERGED CAMPUS

SAME NETWORK SERVICES ON WIRED AND WIRELESS



UNIFY THE
ACCESS

Network Management

Network Services

AIRGROUP

USER
PROFILING

VDI FLUENCY

ADVANCED
POLICY
MGMT

DEVICE
ONBOARDING

GUEST
MANAGEMENT

ONGUARD

DEVICE
PROFILING

MULTIMEDIA
FLUENCY

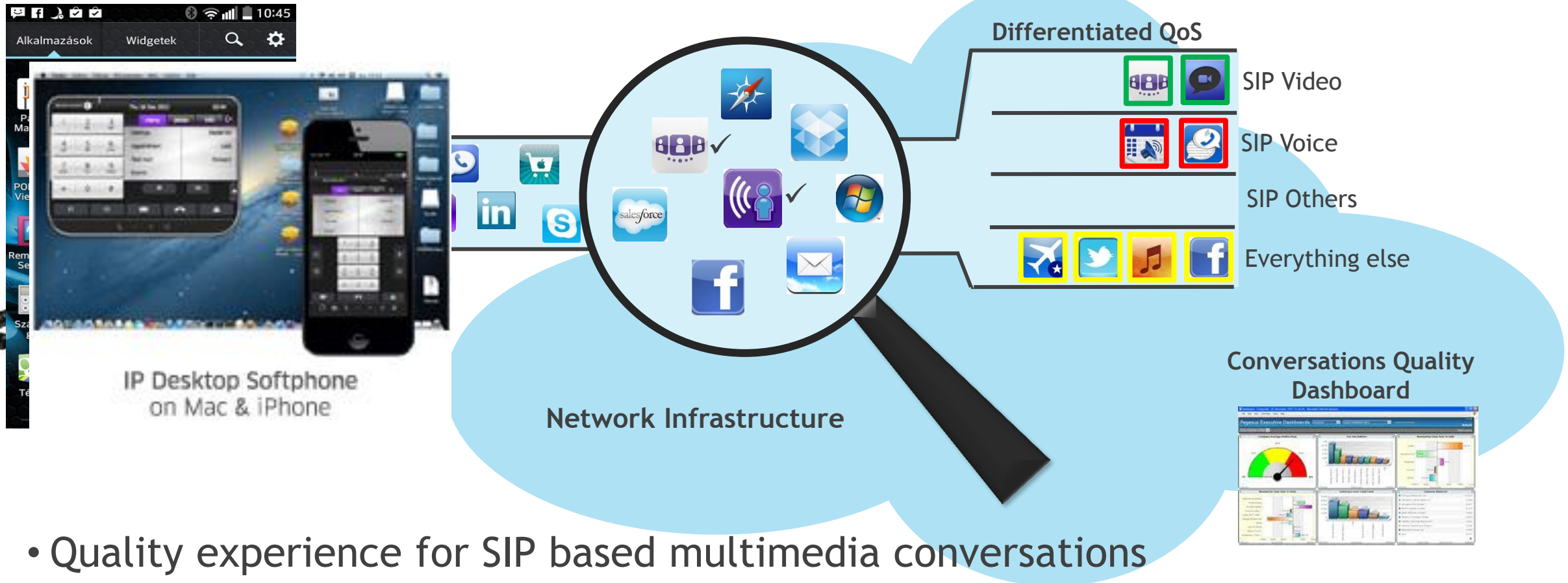
LAN

WiFi



MULTIMEDIA FLUENCY

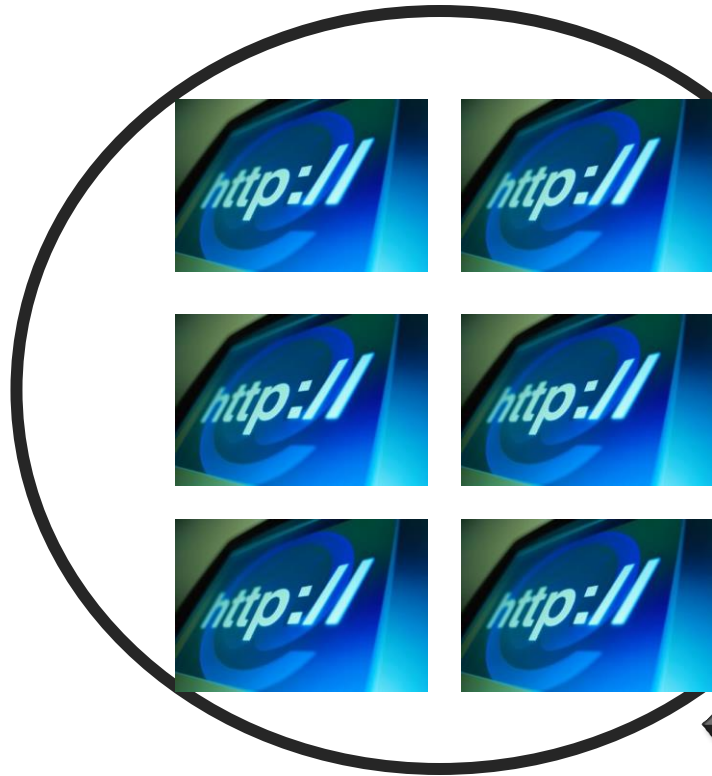
REAL-TIME PROTOCOLS DO NOT LIKE CONGESTION



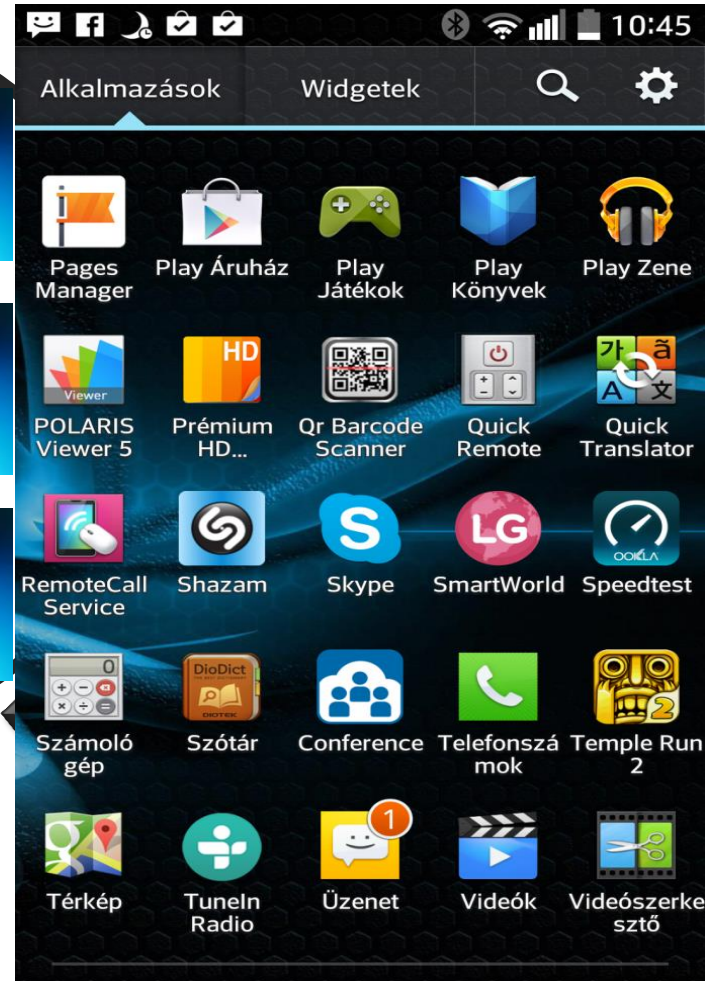
- Quality experience for SIP based multimedia conversations
- Visibility of actual service level via dashboard

APPLICATION ANALYTICS

DETAILED VISIBILITY EVEN WITH THE “WEBIFICATION” OF APPLICATIONS



Without Analytics

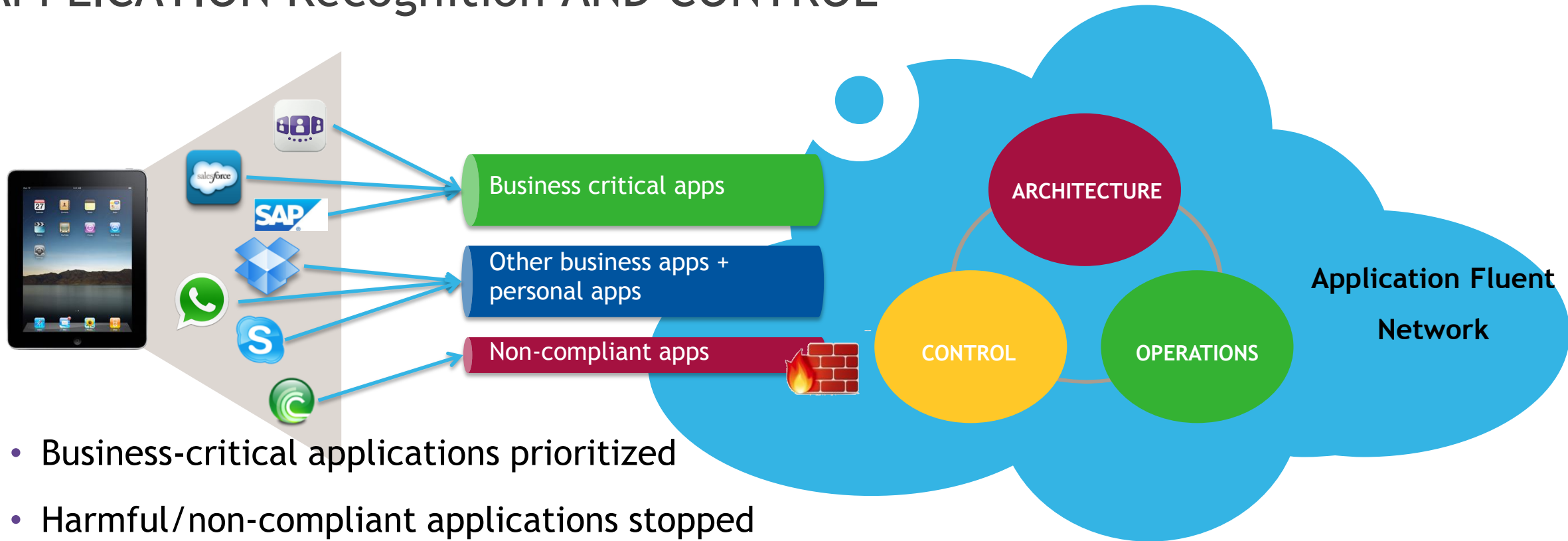


With Analytics

21st Century Application Analytics

APPLICATION CENTRIC NETWORK SERVICES

APPLICATION Recognition AND CONTROL



- Business-critical applications prioritized
- Harmful/non-compliant applications stopped
- Harmonized coexistence of business and personal apps
- Available on OS6860 and OS6900 switches and WLAN controllers

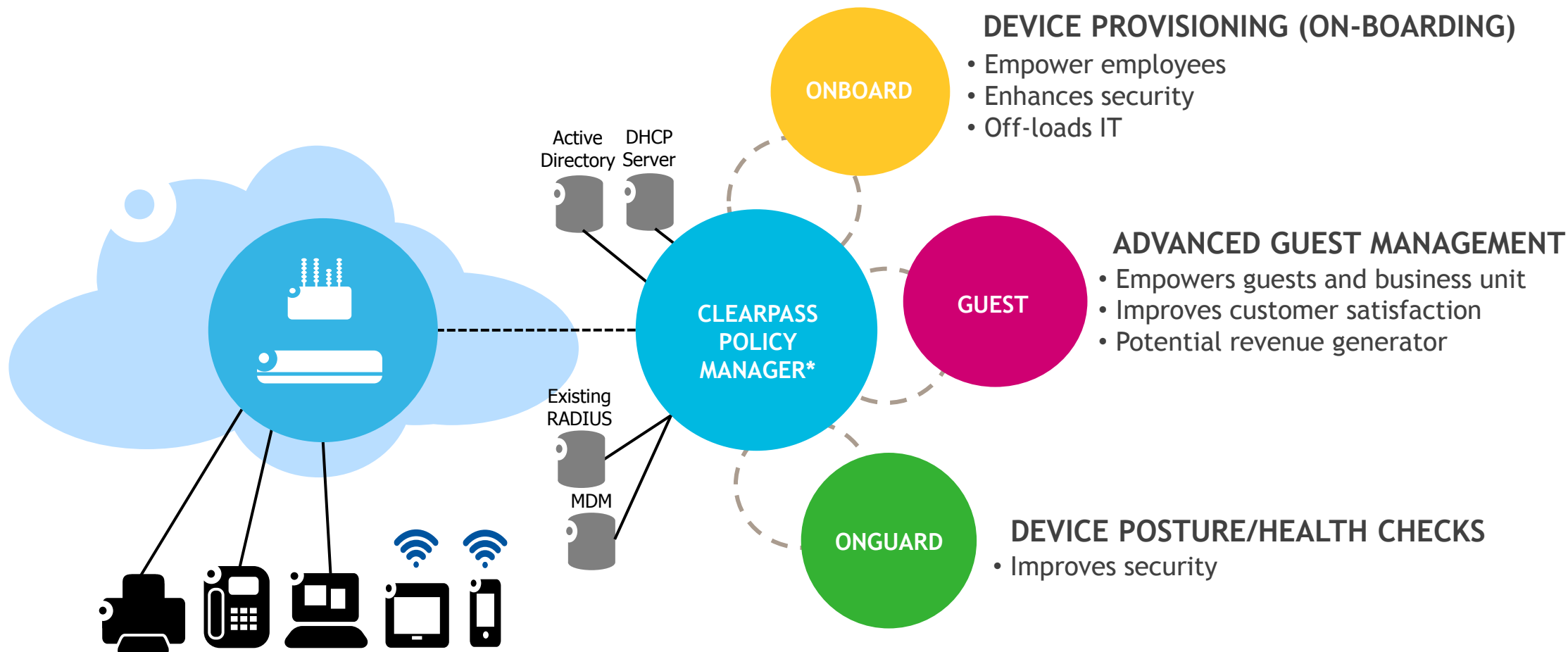


An Example of a Unified access BY ALCATEL-LUCENT



user mobility; unified and secure

BYOD SERVICES WITH CLEARPASS FOR WIRED & WIRELESS DEVICES

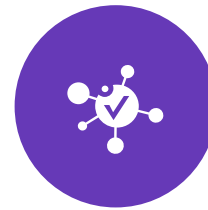


*** INCLUDES ADVANCED POLICIES AND DEVICE FINGERPRINTING**

- Better visibility
- Enhanced user experience

Unified Access

One Network • One Management • Application Fluent



Follow us on



[Twitter.com/ALUEnterprise](https://twitter.com/ALUEnterprise)



[Facebook.com/ALUEnterprise](https://facebook.com/ALUEnterprise)



[Youtube.com/user/enterpriseALU](https://youtube.com/user/enterpriseALU)



[Linkedin.com - Group: Alcatel-Lucent Enterprise](https://linkedin.com/group/Alcatel-Lucent-Enterprise)



[Slideshare.net/tagged/Enterprise](https://slideshare.net/tagged/Enterprise)



[Storify.com/ALUEnterprise](https://storify.com/ALUEnterprise)