



Kommunikációs rendszerekben gondolkodunk

Y O U N G   E N T E R P R I S E   D A Y   >

**2015**  
október 15.

# ÚJDONSÁGOK AZ ALCATEL-LUCENT ENTERPRISES ADATOS KÍNÁLATÁBAN

Luky Gábor

AL-E International, pre-sales mérnök

# Tartalom

- Új LAN switching megoldások az SMB szektor számára
- Intelligent Fabric és új Core/DC switching platformok
- 802.11ac wave 2

# TOP SMB BUSINESS ISSUES, PRIORITIES AND IT CHALLENGES



## Top IT Priorities for 2015

OS6350

- Mobility Solutions
  - Secure LAN/Wireless LAN and APs ✓
- Collaboration
  - IP Telephony, OpenTouch, Multi-media and Devices ✓
- IoT & Converged Infrastructure
  - Single Vendor Voice/Data/Wi-Fi solution Tested and Validated ✓

# OMNISWITCH 6350 GIGABIT ETHERNET SWITCH PRODUCT OVERVIEW

- OmniSwitch 6350 Family of Gigabit Ethernet Switches

- Four fixed configurations (24-/48-ports, with/without PoE)
- Supports Gigabit RJ-45 access and up to four dedicated Gigabit SFP uplinks
- Has a fixed power supply
- Priced between the OS6250 and OS6450 families

**OmniSwitch 6350-24**  
**OmniSwitch 6350-P24**



- Limited feature set for the SMB Market:

- Auto-configurable via OmniPCX Office
- Limited applicability to other markets:
  - No 10Gbps Uplinks, No Stacking, No redundant or external P/S options
  - Limited software features: No Unified Access, No BYOD, No Metro Ethernet, No SDN

**OmniSwitch 6350-48**  
**OmniSwitch 6350-P48**



# OmniSwitch 6350 Models

Model	100/1000 RJ-45 access ports	Fixed SFP 1G Uplink ports	Power Supply
OS6350-24	24	4	Internal Primary
OS6350-P24	24 (PoE)	4	Internal Primary (380W)
OS6350-48	48	4	Internal Primary
OS6350-P48	48 (PoE)	4	Internal Primary (780W)

## OS6350 models:

- 4 total models -24 (fan-less), -P24, -48 and -P48
- Internal power supply on all models
- No stacking, expansion modules or backup power supplies supported

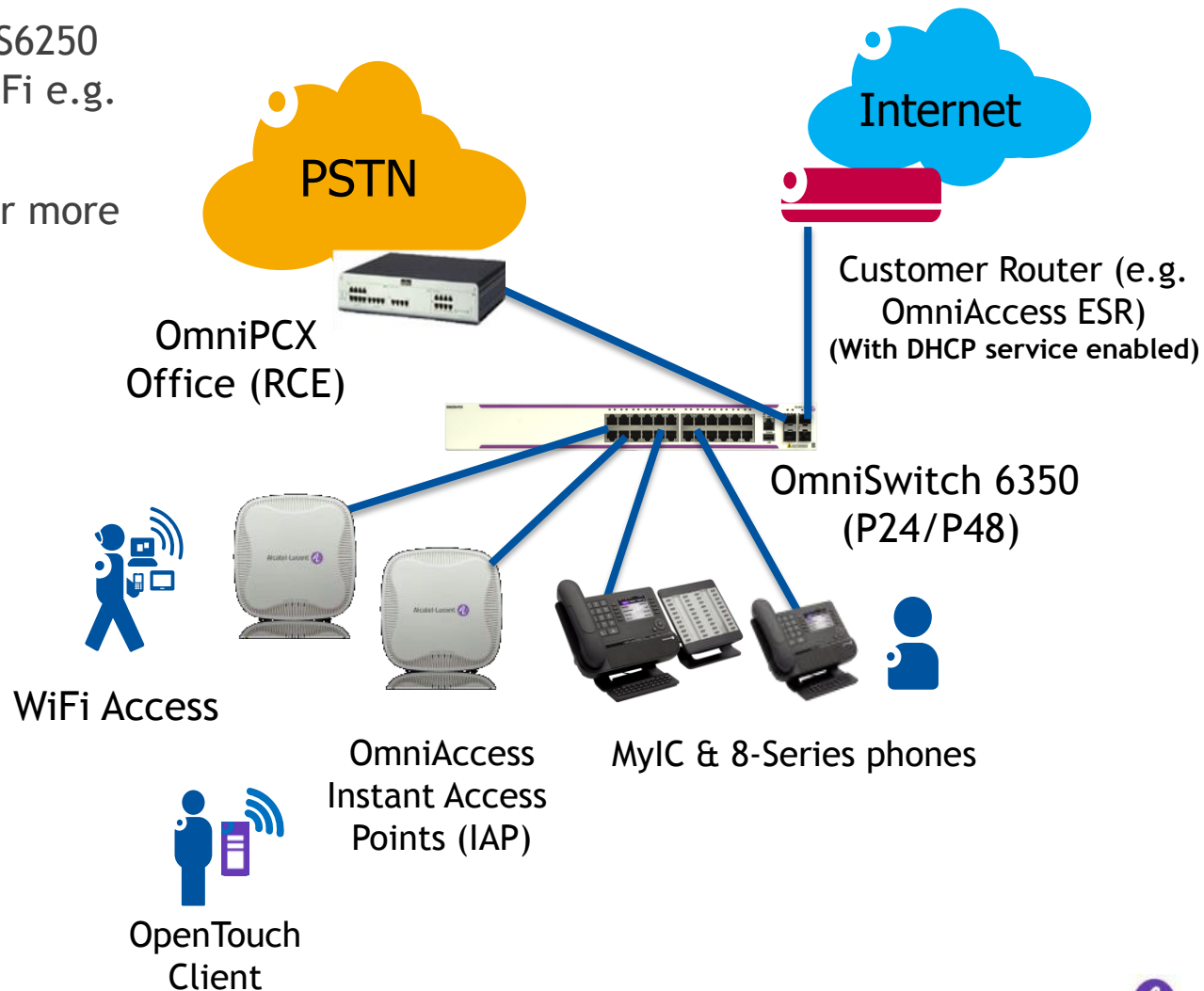
## PoE model

- All PoE user ports of 802.3af/.at compliant
- 380W power budget for P24 and 780W power budget for P48

# SMB - OS6350 SOLUTION EXAMPLE

## NETWORK MOBILITY + IP TELEPHONY SOLUTION

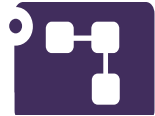
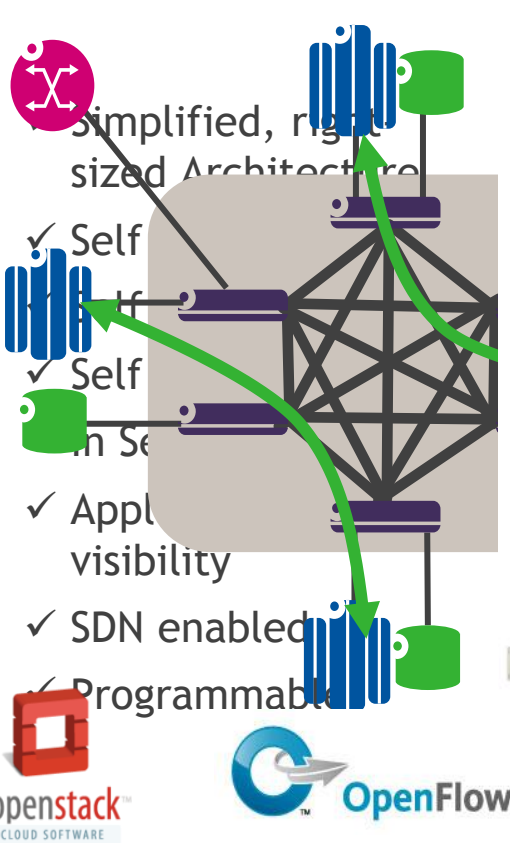
- Higher performance than OS6250 is required for next gen Wi-Fi e.g. 802.11n and 802.11ac
- Lower price than OS6450 for more competitive SMB solution
- Stacking is not needed for 20-100 users
- 10 Gig uplinks not required (up to 4 x 1 Gig uplinks are more than sufficient)





# TECHNOLOGY INNOVATION

## NETWORK TO FABRIC, FABRIC TO INTELLIGENT FABRIC



- Easier design, faster deployment to reduce time, errors and costs
- Efficient network operations and easier troubleshooting
- Rapid integration with applications leading to business agility
- Enabling trend analysis for smarter investment



# INCREASING THE SCALABILITY

## OS6900-Q32 & OS6900-X72

### TWO NEW OS6900 PLATFORMS

- OS6900-Q32
  - 32 x 40G QSFP+ fixed ports
  - 104 x 10G ports with splitter cables
  - 2,56 Tbps L3 switching capacity



- OS6900-X72
  - 6 x 40G QSFP+ fixed ports + 48 x 10G ports
  - 72 x 10G ports with splitter cables
  - 1,44 Tbps L3 switching capacity



- VXLAN hardware gateway support
- ~500 Nanosecond latency
- Interoperates with all current OS6900 models
- Can operate in a Virtual Chassis up to 6 units
- Positioned as Spine Layer or ToR
- Positioned as small core

OS6900-Q32 & OS6900-X72 PROVIDING VERSATILITY WITH INCREASED OPTIONS



# MESH ARCHITECTURE EVOLUTION

## Unique Management

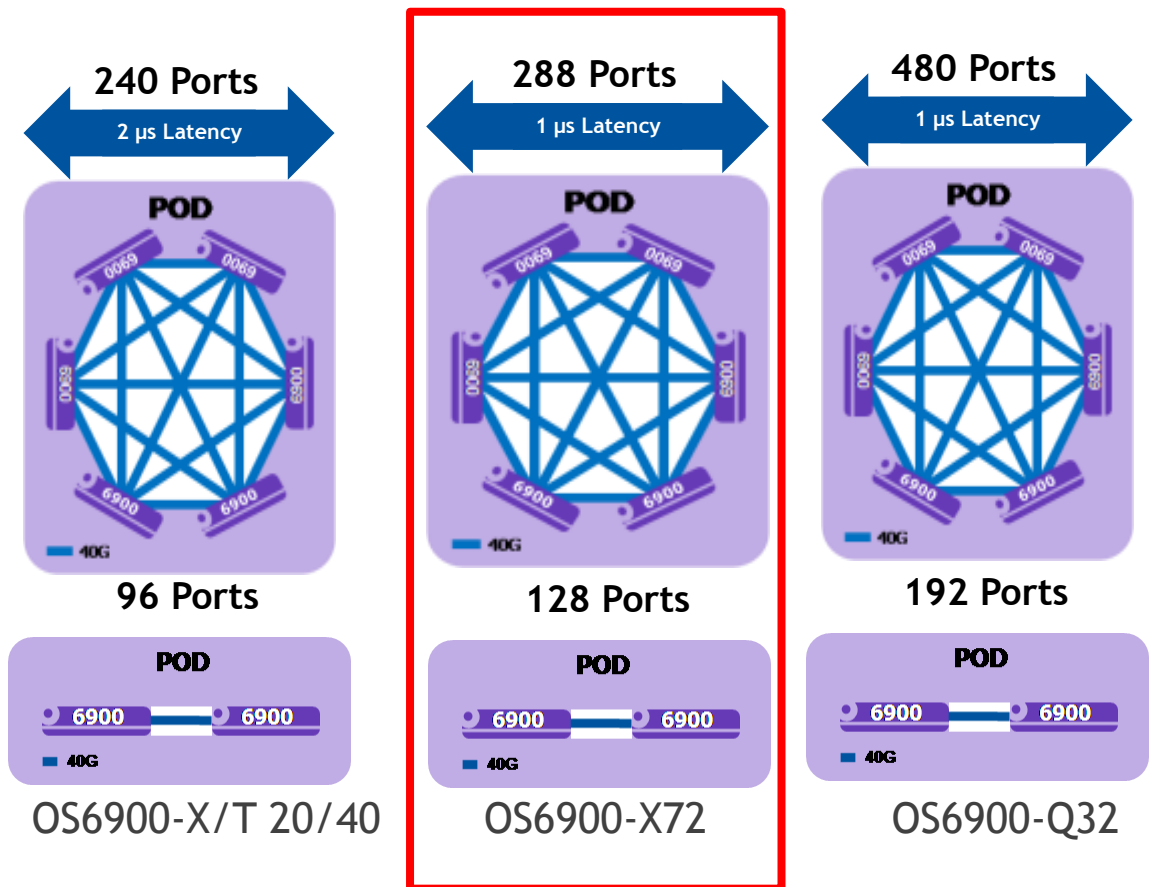
- POD size up to 6 elements
- Mix & match any model

## Unified Control

- Unified control plane
- Interface for OpenFlow controller in API mode
- REST interface

## Distributed forwarding for Performance

- All functions with distributed forwarding
- VxLAN/NVGRE Gateway
- VxLAN tunnel auto-QoS
- 10G-Base-T & FC ports



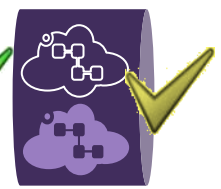
L2 services



L3 services



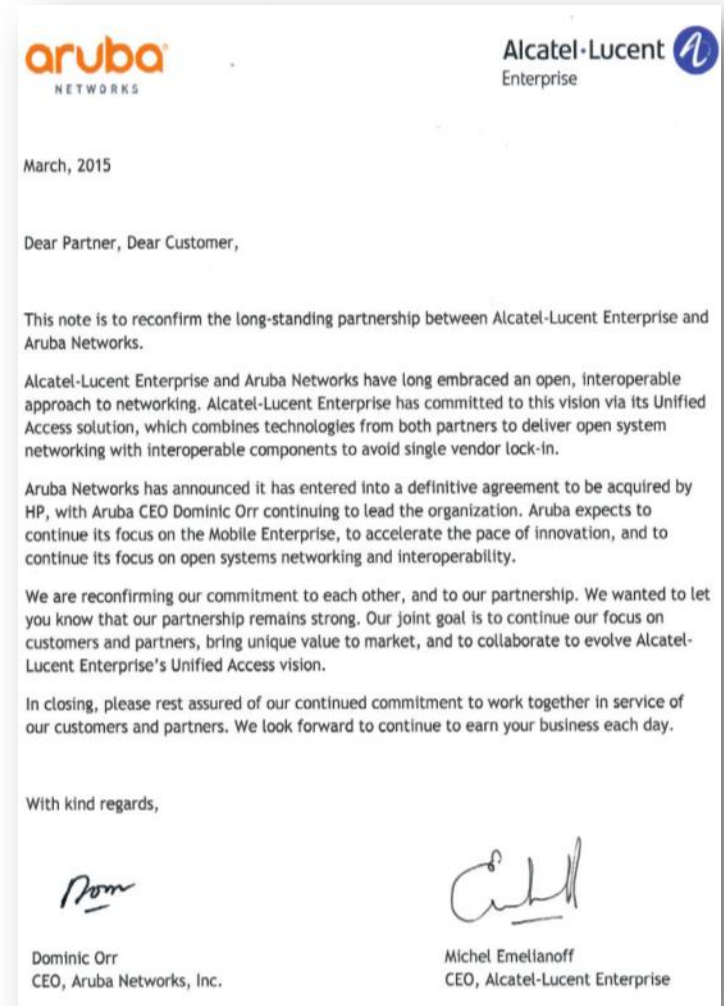
OpenFlow



NV overlay

# OUR PARTNERSHIP REMAINS STRONG

“WE ARE RECONFIRMING OUR COMMITMENT TO EACH OTHER, AND TO OUR PARTNERSHIP.”



[Exclusive interview](#) with Michel Emelianoff, CEO ALE and Dominic Orr, CEO Aruba on our long-standing business partnership.

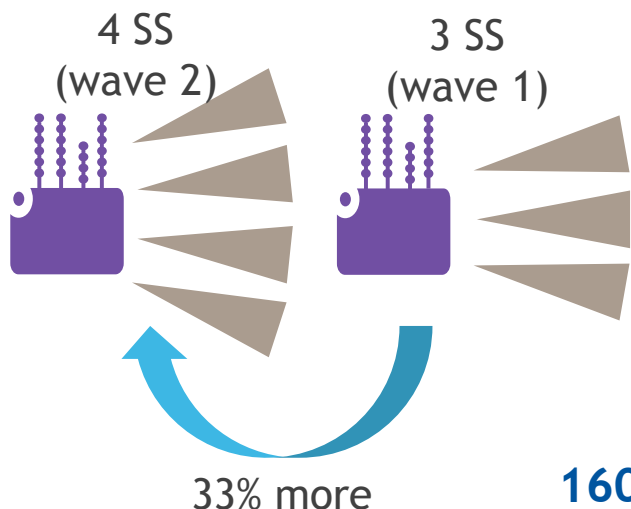
# 802.11ac wave 2 what's new?

## Multi User MIMO

MU-MIMO (wave 2)    SU-MIMO (wave 1)



### Four Spatial Streams



### 160 MHz Channel



Main customer benefits:

- Faster speeds: 433Mbps, 866Mbps, 1.7Gbps (80MHz)
- Simultaneous connections

HIGHER QUALITY MOBILE USER EXPERIENCE

# WLAN ACCESS POINTS PRODUCT FAMILY

## Indoor Access Points



**320 series Wave 2**  
Highest capacity  
2.5 Gbps (802.11)



**220 series Wave 1**  
Highest density  
Dual uplink  
1.9 Gbps (802.11)



**210 series Wave 1**  
Carpeted space  
1.9 Gbps (802.11)



**200 series Wave 1**  
Lower density  
1.2 Gbps (802.11)



**100 series**  
802.11n

## Remote APs



**RAP-3**  
3 ports



**RAP-109**  
4 ports



**RAP-155**  
4 ports



**205H**  
3 ports  
802.11ac

## Outdoor Access Points



**270 Series**  
First & only  
enterprise-  
grade 11ac

## Hospitality Access Points



**205H**  
3 ports  
802.11ac



**AP-103H**  
2 ports  
802.11n

# WELCOME TO THE NEW PC ERA

FOLLOW US ON



[www.twitter.com/ALUEnterprise](http://www.twitter.com/ALUEnterprise)



[www.facebook.com/ALUEnterprise](http://www.facebook.com/ALUEnterprise)



[www.youtube.com/user/enterpriseALU](http://www.youtube.com/user/enterpriseALU)



[www.linkedin.com](http://www.linkedin.com) - Group Alcatel-Lucent Enterprise



[www.slideshare.net/tagged/Enterprise](http://www.slideshare.net/tagged/Enterprise)



[www.storify.com/ALUEnterprise](http://www.storify.com/ALUEnterprise)



enterprise.alcatel-lucent.com