



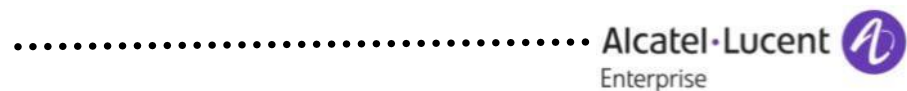
# ÚJDONSÁGOK AZ ALCATEL-LUCENT ENTERPRISES ADATOS KÍNÁLATÁBAN

Luky Gábor

AL-E International, pre-sales mérnök



Kommunikációs rendszerekben gondolkodunk



# Tartalom

- Új LAN switching megoldások az SMB szektor számára
- Intelligent Fabric és új Core/DC switching platformok

# TOP SMB BUSINESS ISSUES, PRIORITIES AND IT CHALLENGES



## Top IT Priorities for 2015

OS6350

- Mobility Solutions
  - Secure LAN/Wireless LAN and APs ✓
- Collaboration
  - IP Telephony, OpenTouch, Multi-media and Devices ✓
- IoT & Converged Infrastructure
  - Single Vendor Voice/Data/Wi-Fi solution Tested and Validated ✓

# OMNISWITCH 6350 GIGABIT ETHERNET SWITCH PRODUCT OVERVIEW

- OmniSwitch 6350 Family of Gigabit Ethernet Switches

- Four fixed configurations (24-/48-ports, with/without PoE)
- Supports Gigabit RJ-45 access and up to four dedicated Gigabit SFP uplinks
- Has a fixed power supply
- Priced between the OS6250 and OS6450 families

**OmniSwitch 6350-24**  
**OmniSwitch 6350-P24**



- Limited feature set for the SMB Market:

- Auto-configurable via OmniPCX Office
- Limited applicability to other markets:
  - No 10Gbps Uplinks, No Stacking, No redundant or external P/S options
  - Limited software features: No Unified Access, No BYOD, No Metro Ethernet, No SDN

**OmniSwitch 6350-48**  
**OmniSwitch 6350-P48**



# OmniSwitch 6350 Models

| Model      | 100/1000 RJ-45 access ports | Fixed SFP 1G Uplink ports | Power Supply            |
|------------|-----------------------------|---------------------------|-------------------------|
| OS6350-24  | 24                          | 4                         | Internal Primary        |
| OS6350-P24 | 24 (PoE)                    | 4                         | Internal Primary (380W) |
| OS6350-48  | 48                          | 4                         | Internal Primary        |
| OS6350-P48 | 48 (PoE)                    | 4                         | Internal Primary (780W) |

## OS6350 models:

- 4 total models -24 (fan-less), -P24, -48 and -P48
- Internal power supply on all models
- No stacking\*, expansion modules or backup power supplies supported

## PoE model

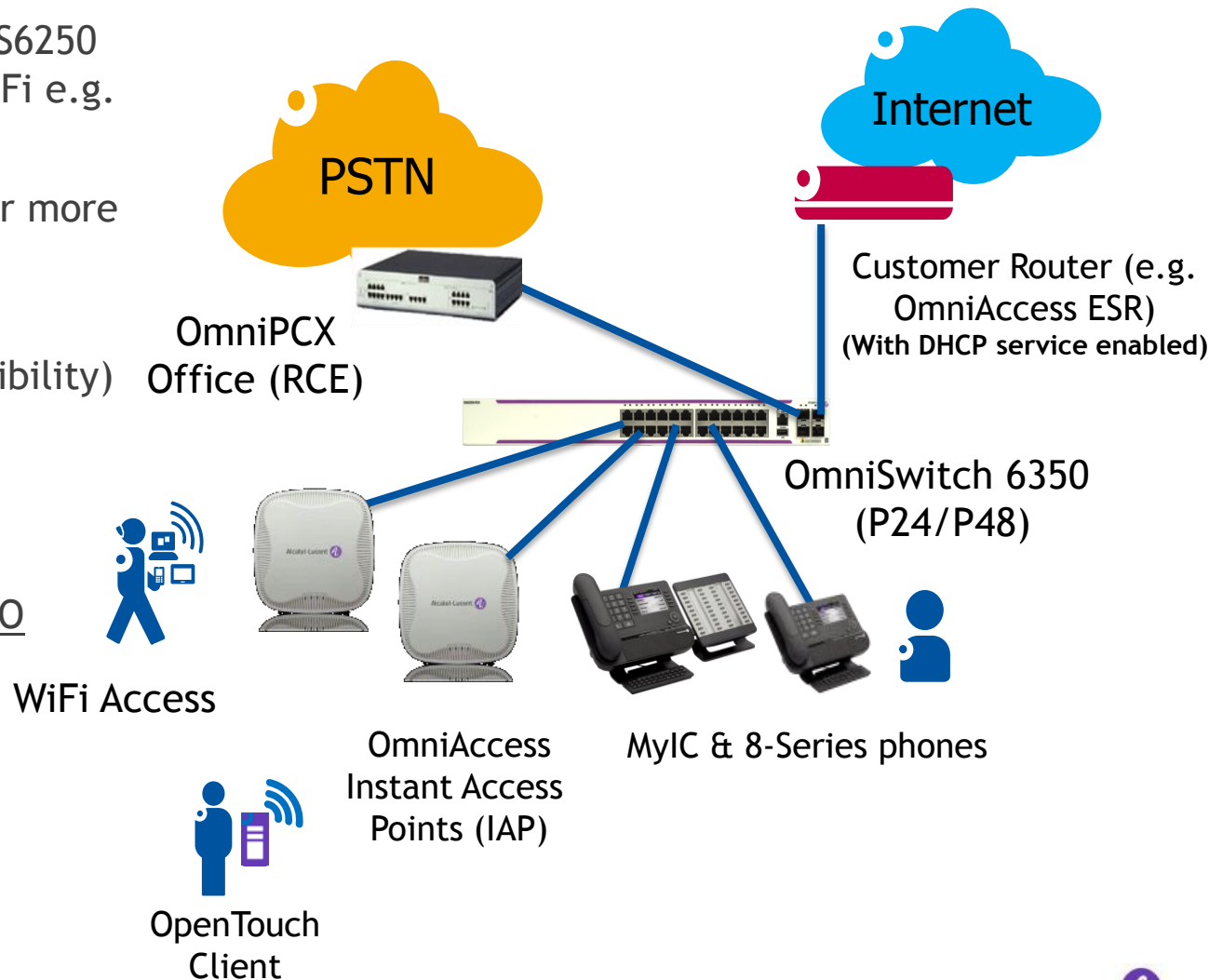
- All PoE user ports of 802.3af/.at compliant
- 380W power budget for P24 and 780W power budget for P48

\* Future availability

# SMB - OS6350 SOLUTION EXAMPLE

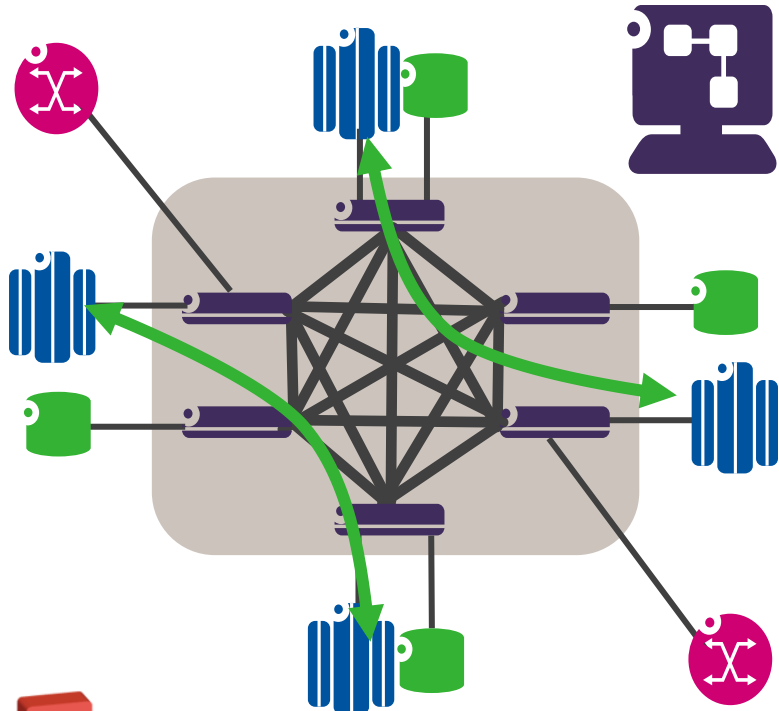
## NETWORK MOBILITY + IP TELEPHONY SOLUTION

- Higher performance than OS6250 is required for next gen Wi-Fi e.g. 802.11n and 802.11ac
- Lower price than OS6450 for more competitive SMB solution
- Stacking is not needed for 20-100 users - (Future availability)
- 10 Gig uplinks not required (up to 4 x 1 Gig uplinks are more than sufficient)
- Auto-Configuration with OXO



# TECHNOLOGY INNOVATION

## NETWORK TO FABRIC, FABRIC TO INTELLIGENT FABRIC



FOLLOWS ELASTIC AND RESILIENT APPLICATIONS

CONVERGES STORAGE

SHOWS APPLICATIONS AND NETWORK RESPONSE

OPEN INTERFACES



# TECHNOLOGY INNOVATION

## NETWORK TO FABRIC, FABRIC TO INTELLIGENT FABRIC

- ✓ Simplified, right-sized Architecture
- ✓ Self configuring
- ✓ Self learning
- ✓ Self healing
- ✓ In Service Upgrade
- ✓ Application visibility
- ✓ SDN enabled
- ✓ Programmable

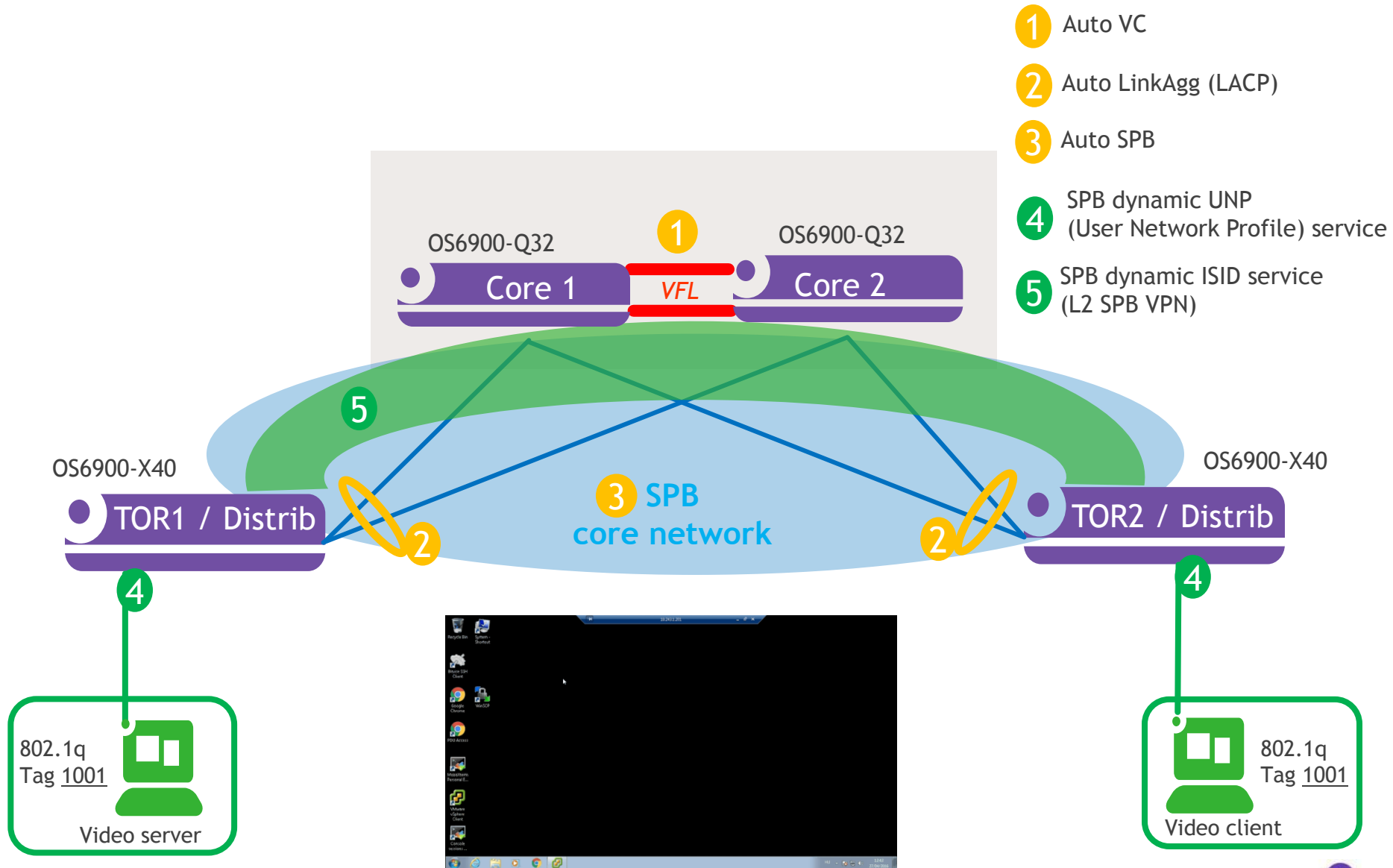


- Easier design, faster deployment to reduce time, errors and costs
- Efficient network operations and easier troubleshooting
- Rapid integration with applications leading to business agility
- Enabling trend analysis for smarter investment



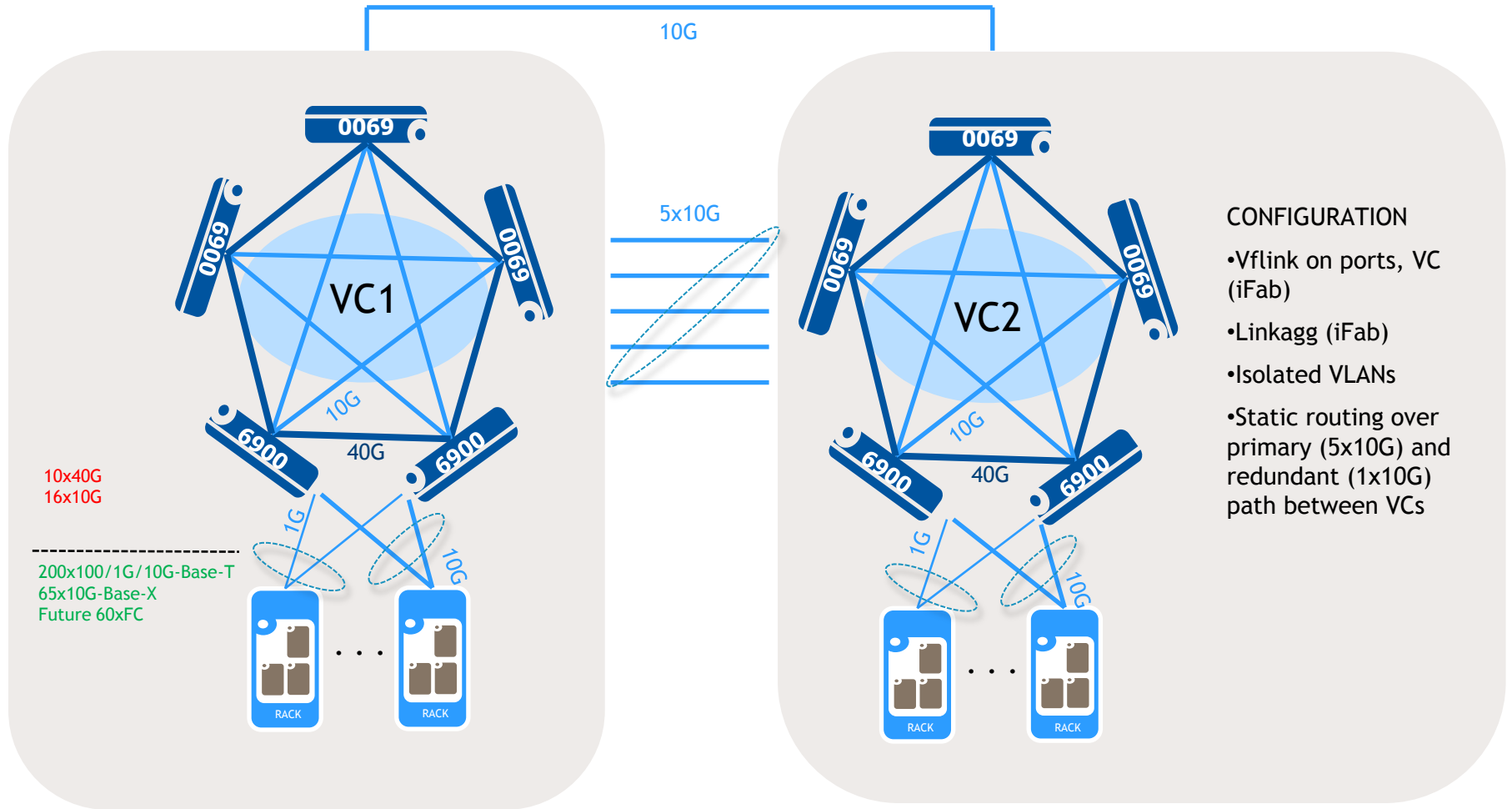


# DEMO DIAGRAM



# USE CASE - DC NETWORK

CZECH REPUBLIC



# INCREASING THE SCALABILITY

## OS6900-Q32 & OS6900-X72

### TWO NEW OS6900 PLATFORMS

- OS6900-Q32
  - 32 x 40G QSFP+ fixed ports
  - 104 x 10G ports with splitter cables
  - 2,56 Tbps L3 switching capacity



- OS6900-X72
  - 6 x 40G QSFP+ fixed ports + 48 x 10G ports
  - 72 x 10G ports with splitter cables
  - 1,44 Tbps L3 switching capacity



- VXLAN hardware gateway support
- ~500 Nanosecond latency
- Interoperates with all current OS6900 models
- Can operate in a Virtual Chassis up to 6 units
- Positioned as Spine Layer or ToR
- Positioned as small core

OS6900-Q32 & OS6900-X72 PROVIDING VERSATILITY WITH INCREASED OPTIONS

# MESH ARCHITECTURE EVOLUTION

## Unique Management

- POD size up to 6 elements
- Mix & match any model

## Unified Control

- Unified control plane
- Interface for OpenFlow controller in API mode
- REST interface

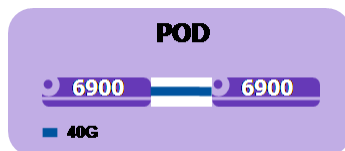
## Distributed forwarding for Performance

- All functions with distributed forwarding
- VxLAN/NVGRE Gateway
- VxLAN tunnel auto-QoS
- 10G-Base-T & FC ports

240 Ports  
2  $\mu$ s Latency

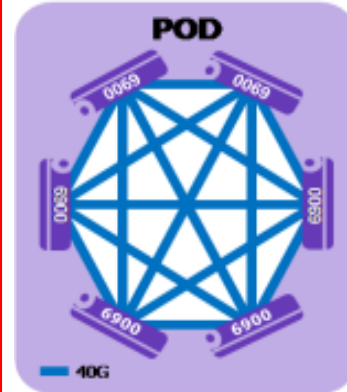


96 Ports

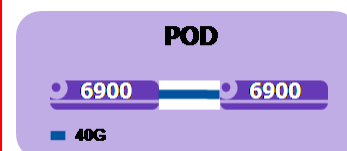


OS6900-X/T 20/40

288 Ports  
1  $\mu$ s Latency



128 Ports

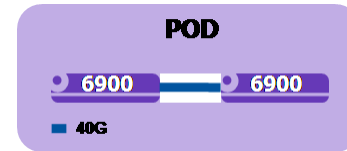


OS6900-X72

480 Ports  
1  $\mu$ s Latency



192 Ports



OS6900-Q32



L2 services



L3 services



OpenFlow



NV overlay

## FOLLOW US ON



[www.twitter.com/ALUEnterprise](http://www.twitter.com/ALUEnterprise)



[www.facebook.com/ALUEnterprise](http://www.facebook.com/ALUEnterprise)



[www.youtube.com/user/enterpriseALU](http://www.youtube.com/user/enterpriseALU)



[www.linkedin.com](http://www.linkedin.com) - Group Alcatel-Lucent Enterprise



[www.slideshare.net/tagged/Enterprise](http://www.slideshare.net/tagged/Enterprise)



[www.storify.com/ALUEnterprise](http://www.storify.com/ALUEnterprise)



[enterprise.alcatel-lucent.com](http://enterprise.alcatel-lucent.com)