



Kommunikációs rendszerekben gondolkodunk



Megújult WiFi kínálat az Alcatel-Lucent-nél

Pálinkás Péter

ALE DATA - Áttekintés

Network Management



OmniVista 2500



OmniVista 3600



ClearPass



5620 SAM

Network Infrastructure

LAN



OmniSwitch 10K



OmniSwitch 9900



OmniSwitch 6900



OmniSwitch 6865



OmniSwitch 6860/E



OmniSwitch 6560



OmniSwitch 6855



OmniSwitch 6450



OmniSwitch 6350

WLAN



OmniAccess WLAN 4x50



OmniAccess WLAN 4030



OmniAccess WLAN 4010



OmniAccess WLAN 4005



OmniAccess WLAN AP, Instant AP & RAP

WAN/MPLS



7750 SR



7450 ESS &
7705 SAR

Enterprise Service Router



OmniAccess ESR

Cyber Security & Network Service

CODEGUARDIAN™

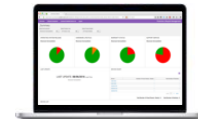


Quarantine Manager



Figure IT Out

Network on demand could be the answer



ProActive Lifecycle Management

Aruba/HPE Partnership

- Hosszú távú partnerség
- +5 év közös fejlesztés
- +10 év technikai támogatás



- AP303H 802.11ac Wave 2
- AP365/367 802.11ac Wave 2 Outdoor
- AP203R/RP 802.11ac Wave 1
- AP203H 802.11ac Wave 1



SMB TOP IT kihívások

- Kihívások
 - Pénzügyi megszorítások
 - Mobilbiztonság
 - Képzett személy keresése
 - Az informatikai beruházások költségkontrolja / indoklása
- Elvárások
 - Költséghatékonyság
 - Enterprise fokozatú megoldás
 - Biztonság
 - Egyszerű telepítés
 - IT-hozzáértő személy nélkül kezelhető



Stellar WLAN - Cebit

- Szép és tiszta megoldás
- Egyszerűbb, mint az Aruba
- Valódi "Unified Locator"
- Jobb design

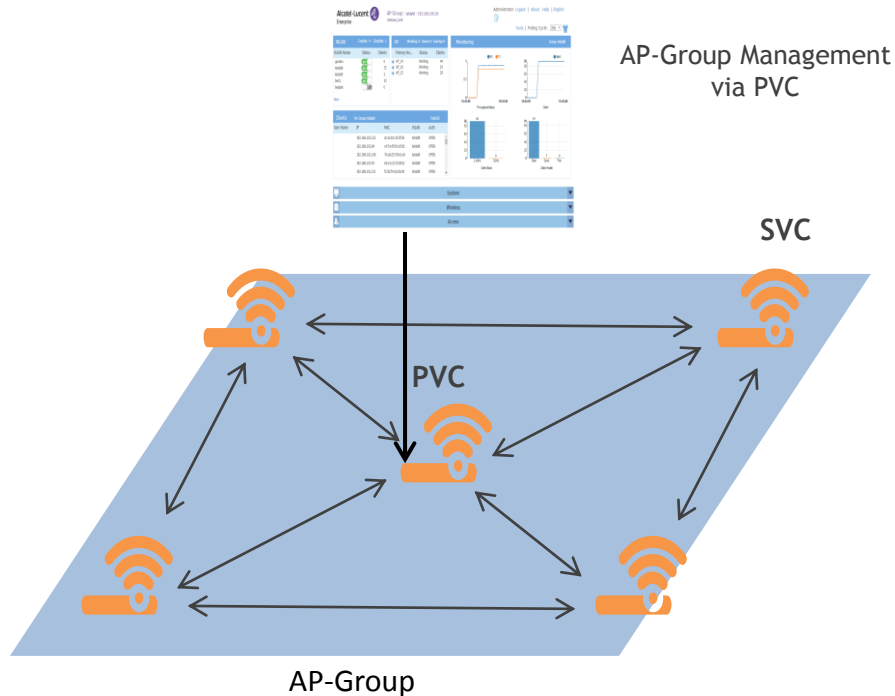


Alcatel-Lucent OmniAccess OAW-AP1101

- 802.11ac Wave1
- Dual radio - 2x2:2SS
- 1.2 Gbps throughput
- 8 SSID/radio
- Controller-less
- 1 GE port
- Up to 16 APs in an AP-Group



AP-Group Architecture



- 16 AP1101
- 256 konkurens felh.
- 16 SSID
- Automatikus felismerés
- Automatikus PVC és SVC felismerés
- Redundancia
- Egyszerű menedzsment
- Zero touch provisioning - Plug and Play

OAW-AP1221/1222 – W2 11ac MID-RANGE INDOOR AP

Dual radio, 802.11ac 4x4:4SS VHT160

- 5GHz radio: 1,733Mbps (with 4SS/VHT80 clients or 2SS/VHT160 clients)
- 2.4GHz radio: 400Mbps 2.4GHz (2SS/VHT40)
- MU-MIMO (4SS but maximum of 3 Clients served with traffic simultaneously)
- Optional BLE radio through USB port
- 1xGbE network interfaces, RJ-45 console, USB port, reset
- 802.3at POE / 48V DC
- Enterprise temperature range, plenum rated
- Built-in antenna (OAW-AP1221)
- External antenna connectors (OAW-AP1222)



OAW-AP1231/1232 – W2 11ac HIGH-END INDOOR AP



Tri radio, 802.11ac 4x4:4SS VHT160 and Integrated BLE

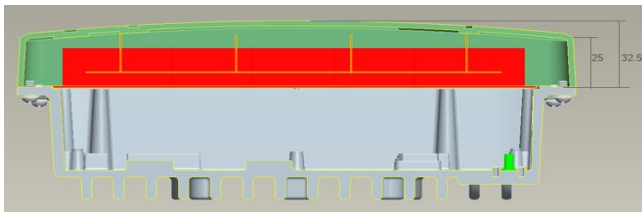
- First 5GHz radio: 1,733Mbps (with 4SS/VHT80 clients or 2SS/VHT160 clients)
- Second 5GHz radio: 1,733Mbps (with 4SS/VHT80 clients or 2SS/VHT160 clients) or monitoring radio
- Third 2.4GHz radio: 800Mbps 2.4GHz (4SS/VHT40)
- MU-MIMO (4SS but maximum of 3 Clients served with traffic simultaneously)
- Integrated BLE radio
- 1xGbE + 1x2.5GbE network interfaces, RJ-45 console, USB port, reset
- 802.3bt (40W)/ 48V DC
- Enterprise temperature range, plenum rated
- Built-in antenna (OAW-AP1231)
- External antenna connectors (OAW-AP1232)



OAW-AP1251 – W2 11ac OUTDOOR AP

Dual radio, 802.11ac 2x2:2S

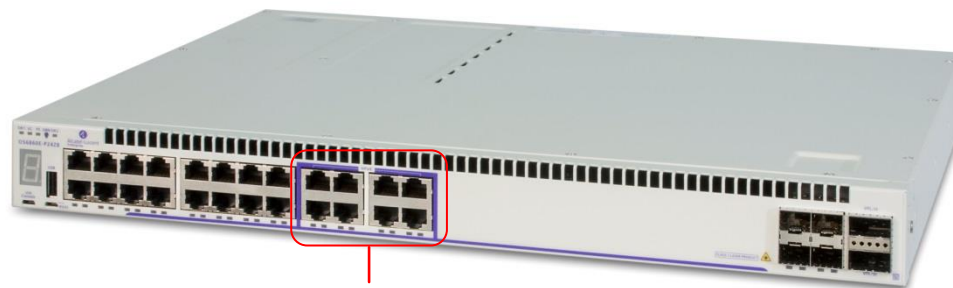
- 5GHz radio: 867 Mbps (with 2SS/VHT80 clients)
- 2.4GHz radio: 400Mbps 2.4GHz (2SS/VHT40)
- 1xGbE network interfaces, RJ-45 console, reset
- 802.3af PoE
- IP67
- Operating temperature : -40 to 65° C
- Built-in Omni Directional antenna



OmniSwitch 6860E-P24Z8 - Phase 1 of multi-gig evolution

- Introduce Multi-Gig for our OS6860/E installed-base
- Same Form factor & port placement as OS6860E-P24
- Same power supplies as of OS6860E family
- Support for both 600W & 920W PSU
- Single Multicolor LED for Multi-gig port to indicate speed/ PoE / Activity
- Stackable with OS6860/E models
- 1588v2 (PTP) support on all user ports.
- 75W HPoE support on Multi-gig ports

User Ports	10/100/1000	16
	100/1G/2.5G	8
SFP+ Uplinks		4
PoE+ Ports		16
75 W HPoE ports		8
20G Stacking Ports		2
Remote Stacking		Yes



Multi gigabit HPoE ports

OmniSwitch 6560



OS6560-P24Z8



OS6560-P24Z24



OS6560-P48Z16

- Linux based AOS software (8.4.x)
- 12/24/48 port MGIG model variations
- PoE supporting .at and .bt standards
- 10G, 10G remote and 20G stacking options

Strategy:

- 1 model at a lower cost (few M gig ports, 2x10GE uplinks, no dedicated stacking)
 - OS6560-P24Z8
- 2 models at an higher cost (many M gig ports, 4x10GE uplinks, with dedicated 20G stack ports)
 - OS6560-P24Z24
 - OS6560-P48Z16



K O M M U N I K Á C I Ó S R E N D S Z E R E K B E N G O N D O L K O D U N K